



Methodist College of Nursing

MCON Catalog

2011-2012

Academic Year

METHODIST COLLEGE OF NURSING

415 St. Mark Court
Peoria, IL 61603
Phone: (309) 671-5133
Fax: (309) 671-8303
<http://www.mcon.edu>



The Higher Learning Commission
North Central Association
30 North LaSalle Street, Suite 2400
Chicago, IL 60602-2504
1-800-621-7440 – phone
Info@hlcommission.org – email
www.ncahigherlearningcommission.org

NLNAC

National League for Nursing
Accrediting Commission, Inc.
3343 Peachtree Road NE, Suite 500
Atlanta, GA 30326
1-404-975-5000 – phone
1-404-975-5020 – fax
nlnac@nlnac.org – email
www.nlnac.org



Commission on Collegiate Nursing Education
One DuPont Circle, NW
Suite 530
Washington, DC 20036

The program and degree requirements specified in this Methodist College of Nursing Catalog apply to students who would commence their studies at Methodist College of Nursing in 2011-2012 academic year and who remain in continuous enrollment until graduation. The provisions of this publication are not to be construed as a contract between the prospective student and Methodist College of Nursing. Methodist College of Nursing reserves the right to change any provision or requirement when such action becomes necessary. Methodist College of Nursing also reserves the right to make changes in its policies and procedures without prior notification.

Students who withdraw and are subsequently readmitted will be subject to the program and degree requirements in effect during the academic year in which she/he is readmitted.

**2011-12 ACADEMIC CALENDAR* - PRE-LICENSURE BACCALAUREATE DEGREE IN NURSING
and PRE-LICENSURE BSN COMPLETION track**

2011 Fall Semester

August 22	Classes begin
August 26	Last day to add a class
September 2	Last day to drop a class
September 5	No classes: Labor Day
October 14	Mid-term grades due
October 14 - 16	Mid-term break **
October 17	Classes resume
October 17	Advising for Spring semester begins
October 28	Last day to withdraw from a class with a grade of "W"
November 23 - 27	Holiday break
November 28	Classes resume
December 9	Last day of classes
December 12 – 16	Final examinations
December 16	Final Graduate grades due
December 17	Graduation
December 20	All Final grades due

2012 Spring Semester

January 16	No classes: Martin Luther King Day
January 17	Classes begin
January 23	Last day to add a class
January 30	Last day to drop a class
March 9	Mid-term grades due
March 12 - 16	Mid-term break **
March 19	Classes resume
March 19	Advising for Summer/Fall semesters begins
March 23	Last day to withdraw from a class with a grade of "W"
May 7	Last day of classes
May 8 - 14	Final examinations
May 15	Final Graduate grades due
May 18	All Final grades due
May 19	Graduation

2012 Summer Term

June 4	Classes begin
June 6	Last day to add a class
June 8	Last day to drop a class
June 29	Midterm grades due
July 4	Holiday - No classes
July 8	Last day to withdraw from a class with a grade of "W"
July 25	Last day of classes
July 26-27	Final examinations
August 3	Final Grades Due

*Calendar is subject to change

** In the event of a closure day due to inclement weather,
the make-up day will be held during a term break .

2011-2012 ACADEMIC CALENDAR* - SECOND DEGREE ACCELERATED BSN track

2011 Fall Semester

August 21	Classes begin
August 25	Last day to add a class
August 30	Last day to drop a class
October 9	Mid-term grades due
October 10 – 13	Mid-term break **
October 14	Classes resume
October 24	Last day to withdraw from a class with a grade of “W”
November 24 - 27	Holiday break – No classes
November 28	Classes resume
December 10	Last day of classes
December 11 – 16	Final examinations
December 16	Final grades due
December 17	Graduation
December 20	All Final grades due

2012 Spring Semester

January 15	Classes begin
January 19	Last day to add a class
January 24	Last day to drop a class
March 5	Mid-term grades due
March 5 - 8	Mid-term break **
March 9	Classes resume
March 19	Last day to withdraw from a class with a grade of “W”
April 6 - 9	Holiday Break – No classes
April 10	Classes resume
May 5	Last day of classes
May 6 - 12	Final examinations
May 15	Final grades due
May 19	Graduation

2012 Summer Semester

May 20	Classes begin
May 23	Last day to add a class
May 28	Last day to drop a class
July 1	Mid-term grades due
July 9	Last day to withdraw from a class with a grade of “W”
August 4	Last day of classes
August 5-11	Final examinations
August 13	Final Grades Due

*Calendar is subject to change

** In the event of a closure day due to inclement weather, the make-up day will be held during a term break .

2011-2012 ACADEMIC CALENDAR* - RN-BSN track

2011 Fall Semester

August 22	1st 8-week classes begins
August 24	Last day to add a 1st 8-week class
August 26	Last day to drop a 1st 8-week class without grade of "W"
September 26	Last day to withdraw from 1st 8-week class with grade of "W"
October 15	End of 1st 8-week classes
October 17	Final grades due
October 17	2nd 8-week classes begin
October 19	Last day to add a 2nd 8-week class
October 21	Last day to drop a 2nd 8-week class without grade of "W"
November 21	Last day to withdraw from 2nd 8-week class with grade of "W"
December 10	End of 2nd 8-week classes
December 12	Final grades due
December 17	Graduation

2012 Spring Semester

January 17	1st 8-week classes begins
January 19	Last day to add a 1st 8-week class
January 23	Last day to drop a 1st 8-week class without grade of "W"
February 20	Last day to withdraw from 1st 8-week class with grade of "W"
March 10	End of 1st 8-week classes
March 12	Final grades due
March 12	2nd 8-week classes begin
March 14	Last day to add a 2nd 8-week class
March 16	Last day to drop a 2nd 8-week class without grade of "W"
April 16	Last day to withdraw from 2nd 8-week class with grade of "W"
May 5	End of 2nd 8-week classes
May 7	Final grades due
May 19	Graduation

2012 Summer Semester

June 4	Summer 8-week classes begin
June 6	Last day to add a Summer 8-week class
June 8	Last day to drop a Summer 8-week class without grade of "W"
July 9	Last day to withdraw from Summer 8-week class with grade of "W"
July 28	End of Summer 8-week classes
August 3	Final grades due

*Calendar is subject to change

2012-13 ACADEMIC CALENDAR* - PRE-LICENSURE BACCALAUREATE DEGREE IN NURSING and PRE-LICENSURE BSN COMPLETION track

2012 Fall Semester

August 20	Classes Begin
August 24	Last Day to Add a Fall Class
August 31	Last Day to Drop a Fall Class
September 3	No Classes: Labor Day
October 12	Mid-term Grades Due
October 12	Mid-term Break Begins **
October 15 (7 am)	Classes resume
October 15	Academic Advising for Spring Registration Begins
October 26	Last Day to Withdraw From a Class With a Grade of "W"
November 20 (5pm)	Thanksgiving Break Begins
November 26 (7 am)	Classes Resume
December 7	Last Day of Classes
December 8 - 13	Final Examinations
December 14 (noon)	Final <u>Graduate</u> Grades Due
December 15	Graduation
December 18	All Final Grades Due

2013 Spring Semester

January 14	Classes begin
January 18	Last Day to Add a Spring Class
January 21	No Classes: Martin Luther King Day
January 28	Last Day to Drop a Class
March 8	Mid-term Grades Due
March 11 (7 am)	Mid-term Break Begins **
March 18 (7 am)	Classes Resume
March 18	Academic Advising for Summer and Fall Registration Begins
March 28	Last Day to Withdraw From a Class With a Grade of "W"
March 29	Holiday (no classes)
April 1 (7 am)	Classes Resume
May 7	Last day of classes
May 7-14 (Finals begin 7th 6pm)	Final examinations
May 17 (noon)	Final <u>Graduate</u> Grades Due
May 18	Graduation
May 21	All Final Grades Due

2013 Summer Term

June 3	Classes begin
June 5	Last Day to Add a Summer Class
June 7	Last Day to Drop a Summer Class
June 28	Midterm Grades Due
July 4	Holiday (no classes)
July 8	Last Day to Withdraw From a Class With a Grade of "W"
July 23	Last Day of Classes
July 24-26	Final Examinations
July 29	Final Grades Due

*Calendar is subject to change

**** In the event of a closure day due to inclement weather, the make-up day will be held during a term break .**

2012-2013 ACADEMIC CALENDAR* - SECOND DEGREE ACCELERATED BSN track

2012 Fall Semester

August 21	Classes Begin
August 27	Last Day to Add a Fall Class
September 4	Last Day to Drop a Fall Class
October 8	Mid-term Grades Due
October 8 – 11	Mid-term Break **
October 12	Classes Resume
October 26	Last Day to Withdraw From a Class With a Grade of “W”
November 21 - 26	Holiday Break – No Classes
November 27	Classes Resume
December 9	Last Day of Classes
December 10 – 13	Final Examinations
December 14	Final <u>Graduate</u> Grades Due
December 15	Graduation
December 18	All Final Grades Due

2013 Spring Semester

January 15	Classes Begin
January 22	Last Day to Add a Class
January 29	Last Day to Drop a Class
March 11	Mid-term Grades Due
March 11 - 14	Mid-term Break **
March 15	Classes Resume
March 25	Last Day to Withdraw From a Class With a Grade of “W”
March 22 - 31	Holiday Break – No Classes
April 1	Classes Resume
May 5	Last Day of Classes
May 6 - 12	Final Examinations
May 15	Final <u>Graduate</u> Grades Due
May 18	Graduation
May 21	All Final Grades Due

2013 Summer Semester

May 21	Classes begin
May 28	Last day to add a class
June 3	Last day to drop a class
July 1	Mid-term grades due
July 12	Last day to withdraw from a class with a grade of “W”
August 4	Last day of classes
August 5-11	Final examinations
August 15	All Final Grades Due

*Calendar is subject to change

**In the event of a closure day due to inclement weather,
the make-up day will be held during a term break .

2012-2013 ACADEMIC CALENDAR* - RN-BSN track

2012 Fall Semester

August 20	1st 8-week classes begins
August 22	Last Day to Add a 1st 8-week Class
August 24	Last Day to Drop a 1st 8-week class Without grade of "W"
September 21	Last Day to Withdraw From 1st 8-week Class With Grade of "W"
October 12	End of 1st 8-week Classes
October 15	Final grades due
October 15	2nd 8-week Classes Begin
October 17	Last Day to Add a 2nd 8-week Class
October 19	Last Day to Drop a 2nd 8-week Class Without Grade of "W"
November 16	Last Day to Withdraw from 2nd 8-week class with grade of "W"
December 7	End of 2nd 8-week classes
December 11	Final Grades Due
December 18	Graduation

2013 Spring Semester

January 14	1st 8-week Classes Begin
January 16	Last Day to Add a 1st 8-week Class
January 18	Last Day to Drop a 1st 8-week Class Without Grade of "W"
February 15	Last Day to Withdraw From 1st 8-week Class With Grade of "W"
March 8	End of 1st 8-week classes
March 11	Final Grades Due
March 11	2nd 8-week Classes Begin
March 13	Last Day to Add a 2nd 8-week Class
March 15	Last Day to Drop a 2nd 8-week Class Without Grade of "W"
April 12	Last Day to Withdraw From 2nd 8-week Class With Grade of "W"
May 3	End of 2nd 8-week Classes
May 6	Final Grades Due
May 18	Graduation

2013 Summer Semester

June 3	Summer 8-week Classes Begin
June 5	Last Day to Add a Summer 8-week Class
June 7	Last Day to Drop a Summer 8-week class Without Grade of "W"
July 5	Last Day to Withdraw From Summer 8-week Class With Grade of "W"
July 26	End of Summer 8-week Classes
July 29	Final Grades Due

*Calendar is subject to change

TABLE OF CONTENTS

Catalog.....	3
Academic Calendars.....	4
2011-12 Academic Calendar* Pre-licensure Baccalaureate Degree in Nursing and Pre-licensure BSN Completion track.....	4
2011-12 Academic Calendar* Second Degree Accelerated BSN track.....	5
2011-12 Academic Calendar* RN-BSN track.....	6
2012-13 Academic Calendar* Pre-licensure Baccalaureate Degree in Nursing and Pre-licensure BSN Completion track.....	7
2012-13 Academic Calendar* Second Degree Accelerated BSN track.....	8
2012-13 Academic Calendar* RN-BSN track.....	9
Table of Contents.....	10
Equal Access/Equal Opportunity.....	12
Americans with Disabilities.....	12
Family Educational Rights and Privacy Act (FERPA).....	12
Introduction to Methodist College of Nursing.....	13
Overview.....	13
History.....	13
Mission Statement.....	14
Vision Statement.....	14
Values.....	14
MCON Institutional Goals.....	14
The Campus.....	14
Admission to the College.....	15
Admission Criteria and Policies.....	15
Readmission Policy.....	17
Financial Information.....	20
Tuition and Fees Pre-licensure Baccalaureate Degree and BSN Completion Track.....	20
Tuition and Fees Second Degree Accelerated BSN Track.....	22
Tuition and Fee Definitions.....	24
Tuition and Fees RN-BSN Track.....	25
Refund Processing Policy.....	27
Tuition Refund Policy and Schedules.....	27
Financial Aid.....	28
Overview.....	28
Financial Aid Programs.....	28
Satisfactory Academic Progress.....	29
Campus Life.....	31
Residence Life.....	31
Support Activities.....	31
Support Services (for Students).....	32
Campus Safety.....	32
Academic Advising.....	32
Personal Counseling.....	33
Child Care.....	33
Learning Resource Centers.....	33
Library.....	33
Center for Student Success.....	33
Career Placement.....	34
Disability Services.....	34
Computer Laboratory.....	34
Laptop Requirements.....	34
Graduate School Information.....	34
The Academic Program.....	35
Academic Purpose and Goals.....	35
Academic Support Policies, Information, & Procedures.....	36
Registration and Enrollment Policies.....	38
Academic Standards.....	38
General Education Requirements.....	42
The Nursing Programs.....	43
Four-Year Pre-Licensure BSN.....	43

General Information.....	43
Requirements for Degrees.....	44
2nd Degree Accelerated Program	52
General Information.....	52
Requirements for Degrees.....	52
RN BSN	58
General Information.....	58
Requirements for Degrees.....	57
BSN Completion (No Longer Accepting Applications)	61
General Information.....	61
Requirements for Degrees.....	61
College Personnel	64
Organizational Structure.....	64
Administrative Officers and Staff.....	65
Faculty.....	67
Accreditation	69
Index	70

Equal Access/Equal Opportunity

Without regard to race, color, gender, sexual orientation, creed, age, religion, marital status, national origin, or disability, Methodist College of Nursing commits to the following:

- Methodist College of Nursing is an equal access/equal opportunity employer and shall recruit, employ, evaluate, assign, promote, or dismiss employees in compliance with all federal and state legislation pertaining to non-discrimination.
- Methodist College of Nursing shall provide equal educational opportunities to prospective and enrolled students to include recruitment, admission, programs and activities, facilities, counseling and testing, financial assistance, evaluation, dismissal, graduation, and placement.
- The equal opportunity principle applies to students, applicants for admission, applicants for employment, employees, and otherwise qualified disabled persons with regard to employment, the delivery of educational programs and services, and all other appropriate areas in which Methodist College of Nursing is involved.
- Methodist College of Nursing prohibits racial, ethnic, religious, physical, and sexual harassment of its employees and students. Furthermore, Methodist College of Nursing prohibits any form of discrimination based on sexual orientation or discrimination based upon religion and assures reasonable accommodation of religious observances, practices, and beliefs of individual students and employees in regard to admission, class attendance, scheduling of examinations, and work assignments.

Americans with Disabilities

Methodist College of Nursing is in compliance with the Americans with Disabilities Act of 1990, Title VI and VII of the Civil Rights Act of 1964, Title IX of the Educational Amendments of 1972, Section 504 of the Rehabilitation Act of 1973, and the Age Discrimination in Employment Act of 1967.

Inquiries or complaints may be addressed to the President of the College.

Section 504 of the Rehabilitation Act of 1973 as amended states in part under section 7(20) that “no qualified individual with a disability in the United States shall be excluded from, denied the benefits of, or be subjected to discrimination under any program or activity that receives Federal financial assistance”.

Reasonable accommodations will be made for qualified students with disabilities unless they impose an undue hardship on the College. Accommodation requests can be made by contacting the Dean of Enrollment Management at (309) 672-5916. Enrollment Management is located on the 6th floor, Office 619.

The Family Educational Rights and Privacy Act (FERPA)

The Family Educational Rights and Privacy Act (FERPA) is a federal law enacted in 1974, which provides students certain rights with respect to his/her education records. Specifically it provides students the right to:

- Inspect and review his/her education records,
- Request the amendment of inaccurate or misleading records,
- Consent to disclosure of personally identifiable information contained in his/her education record, and;
- File a complaint with the U.S. Department of Education concerning alleged failures by Methodist College of Nursing to comply with this law. FERPA authorizes the release of “Directory Information” without the student’s consent under certain conditions that are set forth in the Act. Methodist College of Nursing has defined its “Directory Information” in accordance with the law.

Introduction to Methodist College of Nursing

Overview

Methodist College of Nursing is an operating division of the Methodist Medical Center of Illinois and is a private, non-profit, independent college located in Peoria, Illinois.

Methodist *College of Nursing* offers a broad-based baccalaureate degree in nursing comprised of both general education and nursing e courses. The general education component consists of those arts and sciences supportive of the nursing major and the student's individual interests. Credit earned for nationally standardized exams for selected courses may also be transferred.

The Pre-licensure track is for those individuals who desire to earn a BSN degree and take the licensure exam. Two tracks in the pre-licensure program are available. One is the traditional four year program for students without a prior college degree. For individuals with an earned Bachelors degree, MCON offers an accelerated second degree program. There is also an RN-BSN track for the RN graduate of an Associate degree or Diploma nursing program. This program is a distance learning program; however, it is termed a blended program as there is also a face-to-face component of the program. The RN-BSN track is a two year program.

Methodist College of Nursing recruits and educates qualified in-state and out-of-state students from culturally, racially, and ethnically diverse backgrounds who are interested in an environment that promotes academic excellence in the context and scope of nursing practice. Students are educated to become professional nurses who provide, design, manage, and coordinate direct and indirect care to individuals, families, groups, communities, and populations with health needs of increasing complexity over the duration of the program

History

In 1900, the Deaconesses of the Methodist Episcopal Church opened the Deaconess Home and Hospital and its School of Nursing.

In response to national trends affecting changes in the health care delivery system, the nursing profession, and nursing education, the Methodist School of Nursing 3 year diploma program was phased out and in March of 2000 Methodist College of Nursing was established. In 2008, an RN-BSN online program was started.

In January 2010, MCON began offering a second degree Bachelor of Science in Nursing program for those students who have previously completed a non-nursing bachelor's degree. This option provides a unique opportunity for those individuals committed to a professional career in nursing to earn a second bachelor's degree. This program is designed for those students who have demonstrated academic ability and success by previously earning a bachelor's degree. The second degree program can be completed in five consecutive semesters of full-time study. Graduates of the program are eligible to take the RN-NCLEX licensure examination.

In Fall 2010 semester, the Pre-licensure Baccalaureate Degree in Nursing track was begun offering students the opportunity to start their nursing education at Methodist College of Nursing from the very first classes needed.

Mission Statement

Provide quality educational programs that promote the holistic development of a diverse student population to become healthcare providers. The college is also committed to community service and to meeting the healthcare needs of the diverse population it serves.

Vision Statement

Methodist College of Nursing will be the premier college of choice for excellence in nursing and health sciences education within Central Illinois.

Values

Human Dignity:

- Unconditional respect for the inherent worth, uniqueness, and autonomy of individuals.

Integrity:

- Displaying strong moral character and acting in accordance with accepted standards of behavior and an appropriate code of ethics.

Inquiry:

- An active process of exploration and investigation that leads to understanding and construction of knowledge throughout one's life.

Social Justice:

- Acting in accordance with fair treatment regardless of gender, economic status, race, religion, ethnicity, age, citizenship, disability, or sexual orientation.

Institutional Goals (President ultimately responsible for all)

1. Create and support a positive, student-centered learning environment.
2. Provide quality instruction and programs
3. Create quality student support services and programs.
4. Recruit and retain a diverse, qualified workforce.

5. Promote fiscal responsibility and accountability.
6. Provide adequate resources to support institutional mission
7. Recruit and retain a qualified, diverse student body.
8. Promote collaborative relationships for the benefit of the community.

The Campus

Residence Hall

A Residence Hall is located on floors 3, 4 & 5 of the Methodist College of Nursing Building. The Residence Hall is available to Methodist College of Nursing students. To apply for a room in the Residence Hall, students must complete the Residence Hall Agreement and submit with the required housing deposit.

Student Fitness Center

A Student Fitness Center is located on the third floor of the college and is open to students who live in the MCON Residence Hall only. Outside guests are not permitted to use the Student Fitness Center.

The Student Fitness Center is closed during College holidays.

Wellness Center

A portion of the Student Development Fee allows the student membership at the Methodist Wellness Center, which is located at the Atrium Building, 900 Main Street, Peoria. All Methodist College of Nursing students (full- and part-time) can utilize the Wellness Center. To be admitted to the Wellness Center, the student must present his or her MCON identification.

Campus Facilities

The lobby and commons area are available for student use.

Admission to the College

At Methodist College of Nursing, you'll find a dynamic environment, where students work with experienced professors to develop their skills and talents. You'll also find a place where positive changes are made, and lifelong friendships develop.

We actively seek students who are academically inclined, have a strong educational background, personal integrity and determination, both inside and outside the classroom. Admissions are competitive and only offered to those applicants whose credentials are academically sound.

Admission Criteria and Policies

The application requirements identified below are the minimums to be considered for admission into Methodist College of Nursing. Meeting these minimums does not guarantee admission to the college. Admission standards vary from semester to semester based on the number of applicants and the academic backgrounds of the applicant pool. The minimums requirements to be considered for admission are:

Pre-Licensure track admission (4 year Program or Second Degree):

General Requirements for any Pre-Licensure track admission (4 year Program or Second Degree):

1. Submission of the application for admission and application fee (\$35);
2. Submission of official transcripts from each college or university attended;
3. Students who are home schooled or from a school that is not IBHE accredited will be required to submit transcripts from the organization/program through which they obtained their materials for home schooling and also submit ACT scores;
4. Students who have been academically dismissed from another college/university are not eligible for admission to MCON.

For applicants with less than 30 credit hours of post-secondary education credit at time of application:

- Proof of graduation from a state approved high school program (Diploma or GED Certificate)
- A high school GPA of 2.5 (out of 4.0) or higher.
- Documented ACT composite score of 19.
- A cumulative GPA of 2.0 (out of 4.0) on all college work attempted.

Applicants with 30 or more credit hours of post-secondary education credit at time of application:

- An applicant must have earned 30 or more hours of college credit to be considered a transfer student. The credit must be earned at an accredited college or university.
- A cumulative GPA of 2.0 (out of 4.0) on all college work attempted. A grade of C or better in a course is required for award of transfer credit.
- Documented ACT composite score of 19.

Applicants who already have completed a Bachelor's Degree (applying for the 2nd Degree program):

- Must have completed either a Bachelor of Arts or Bachelor of Science Degree from an accredited institution. The degree must be completed by the time of admission.
- Provide official transcripts from all colleges or universities attended as evidence of obtaining a cumulative GPA of 2.0 on all college work attempted and degree conferred.
- Must have completed 30 hours of the following required prerequisites prior to starting the program.

A & P I – 4 credit hours
 A & P II – 4 credit hours
 MICRO – 4 credit hours
 ENG I – 3 credit hours
 ENG II – 3 credit hours
 PSYC Intro – 3 credit hours
 SOC Intro – 3 credit hours
 Math Concepts – 3 credit hours
 Statistics – 3 credit hours

Additional Admissions Requirements (To be completed after intent to enroll has been received)

Prior to enrollment in a pre-licensure track at Methodist College of Nursing, the following additional requirements must be completed and filed with the Office of Admissions:

- Health history**
- Latex allergy screen**
- A positive latex allergy screen RAST test, if needed
- Results of physical examination
- Urine drug screen (5-panel)**
- Immunizations for measles, mumps, rubella, tetanus, diphtheria, and Hepatitis B**
- Two-step tuberculin skin test; a chest x-ray is required if previously positive tuberculin test or a new reactor**
- DCFS (Department of Children & Family Services) background check*;
- Criminal background check*.

Prior to the student's first **clinical** experience, a student must supply the following to the Office of Admissions:

- Proof of Cardiopulmonary Resuscitation/Automated External Defibrillator (CPR/AED) Health care provider certification**
- Proof of malpractice insurance**.

*A background check that has any violations noted may affect your admissions or enrollment status at the college.

**Failure to provide proof by the required dates will result in your admission status with the college being rescinded.

Applicants who already hold RN licensure (applying for the RN-BSN Degree program):

- Submission of the application for admission and application fee (\$35);
- Proof of completion of a diploma or associate degree in a nursing program.
- Must currently hold a valid RN license.
- Must have completed 30 hours of the following required prerequisites prior to starting the program.

A & P I – 4 credit hours
 A & P II – 4 credit hours
 MICRO – 4 credit hours
 ENG I – 3 credit hours
 ENG II – 3 credit hours
 PSYC Intro – 3 credit hours
 SOC Intro – 3 credit hours
 Speech Communications – 3 credit hours
 Math Concepts – 3 credit hours

- A cumulative GPA of 2.0 on all college work attempted.

Student-At-Large Admission Policy:

Admissions Requirements:

- Submission of the application for admission and application fee (\$35);
- Submission of official transcripts from each college/university attended;
- Documented ACT composite score of 19.

Student-At-Large Policies

- Students-At-Large will be admitted to classes on a space available basis following the open registration period for enrolled MCON students;
- Students-At-Large are not eligible for financial assistance;
- Students-At-Large can only take 12 credit hours at MCON;
- Students-At-Large are not guaranteed admission to the college in a degree

seeking program in subsequent semesters.

Readmission Policy

A student who has institutionally withdrawn from the College, has not been continuously enrolled at the College for one or more semesters, or has been academically dismissed and desires to re-enter the College must apply for readmission. The student must submit an *Application for Admission* through the online application portal, send updated copies of transcripts if appropriate, and submit the \$35 application fee. In addition to these items, the student will provide a written request to the Office of Admissions explaining why he or she should be considered for readmission.

To be considered for readmission to Methodist College of Nursing, applicants must be in good financial standing with the College. Any outstanding balances must be resolved before any decision on the application will be rendered.

Readmission is not guaranteed. Readmission will be made by recommendation of Academic Affairs. Students will be admitted in accordance with the admission policies in effect at the time they are seeking readmission. Time limits and application deadlines for re-entry may apply.

Once accepted for readmission to the College, students will be required to meet the curriculum requirements for the degree as stated in the current catalog and which are in effect at the time of re-entry.

Application Deadlines

Pre-licensure Baccalaureate Degree in Nursing track application dates (4 year program and Second Degree):

The application deadline for the Spring 2012 semester is **September 15, 2011**.

The application deadline for the Fall 2012 semester is **April 15, 2012**.

The application deadline for the Spring 2013 semester is **September 15, 2012**.

Applications received after these deadlines will be considered on a space available basis.

RN-BSN track Students

Applications are accepted at any time for the RN-BSN track students.

Accepted applicants will be placed in the next available cohort.

Transfer Credit Policy

- Credit earned at an accredited institution is transferable provided the course is equivalent in content to the curricular course requirements of Methodist College of Nursing.
- Only credit hours of general education courses with a grade of “C” or higher will be transferred into MCON.
- Only nursing courses with a grade of “B” or higher will be considered for transfer.
- MCON will only accept course credit at the same level that it was earned at the source institution.
- The Grade Point Average (GPA) from the source institution will not be calculated into the Methodist College of Nursing GPA.
- Students must have at least 30 hours in their major to establish “residency” in their major.

General Education Transfer Courses

Methodist College of Nursing (MCON) complies with the General Education Core Curriculum Requirements (GECC) as recommended by the Illinois Articulation Initiative (IAI) Steering Panel and endorsed and published by the Illinois Board of Higher Education (IBHE) in May 2000.

If a course is a non-IAI confirmed equivalent course, the Dean of Academic Affairs evaluates new courses presented for transfer credit based on the accreditation status of the institution, the course

description, and the course syllabus, if necessary for evaluation, in relation to the academic program requirements of MCON.

Students denied transfer credit for a specific course can appeal the decision to the President of the College with the submission of additional course materials that support a determination of equivalency.

The decision of the President is final.

Nursing Transfer Courses

Nursing courses presented for transfer credit are evaluated in collaboration with the nursing faculty by the Dean of Academic Affairs.

Transfer credit decisions are based on the accreditation status of the institution or program within the institution, the course description, and the course syllabus, if necessary for evaluation, in relation to the academic program requirements of MCON.

Students denied transfer credit for a specific course can appeal the decision to the President of the College with the submission of additional course materials that support a determination of equivalency.

The decision of the President is final.

Credit by Examination (CLEP)

Credit for college-level achievement in general education courses may be awarded through the College Level Examination Program (CLEP) administered by College Board. Proficiency examinations are given on national test dates and are designed to give credit for knowledge gained in programs without college credit or for courses, which are not transferable.

CLEP tests will be accepted if passed at the 50th percentile or greater for the following courses: Chemistry; College Algebra; College Mathematics; Precalculus; Calculus; Introduction to Sociology; Introduction to Psychology; Human Growth and Development; English Composition; Principles of Microeconomics; Principles of Macroeconomics; Principles of Management; Humanity and Literature

courses; Foreign Language courses; English Literature; American Literature; Analyzing and Interpreting Literature; US History I and II; and Western Civilization I and II.

College credit will be given as a grade of "P" and will not be computed in the student's GPA. Credit for the above courses will be entered on student transcripts with no grade recorded.

Testing and Fees:

Testing service, site, and fees are the responsibility of the student.

Receipt of Scores:

Students must request that scores be submitted directly from the CLEP Testing Service to the Methodist College of Nursing Office of the Registrar.

Time Limit:

There is no time limit as to when the CLEP test was taken.

Testing Information:

For CLEP testing information, contact the College Admission Office or go to www.collegeboard.com/testing

Credit Through Military Experience

Honorably discharged veterans of the United States Armed Forces may be allowed credit for certain courses upon presentation of a copy of their discharge to the Office of Admissions. This credit may be granted for service schools where equivalence in terms of college courses has been recommended for college credit in the "Guide to the Evaluation of Educational Experiences in the Armed Services," published by the American Council on Education. Appropriate documents must be submitted to the Office of Admissions for an evaluation of these experiences.

Advanced Placement Examinations (AP)

Advanced Placement Examinations are used to grant credit for specific course work. If the student scores equivalent to a 3, 4, or 5, credit for that course will be earned.

Credit:

Credit for the above passed courses will be entered on student transcripts with no grade recorded.

Testing and Fees:

Testing service, site, and fees are the responsibility of the student.

Receipt of Scores:

Students must request that scores be submitted directly from the Advanced Placement Program to the Methodist College of Nursing Office of the Registrar.

Time Limit:

There is no time limit as to when the Advanced Placement Exam was taken.

Testing Information:

For Advanced Placement Exam information, contact the Office of the Registrar

Financial Information

Tuition and Fees

2011-2012 Pre-licensure Baccalaureate Degree and BSN Completion Track Tuition and Fee Schedule*

All correspondence regarding billing will be done electronically. It is the responsibility of the student to check his/her email and CAMS portal regularly to ensure their balances are being paid.

Tuition and fees are due and payable at the time of billing unless alternative arrangements have been agreed upon with the College Bursar. All College charges and credits for each semester are consolidated into one account for each student.

Fall tuition is due on or before August 15.

Spring tuition is due on or before January 10.

Summer tuition is due for Second Degree Students on or before May 15; and for all other students, tuition is due on or before May 31.

NOTE: If any of these dates fall on a holiday, the payment will be due on the following business day.

Fall tuition payment plans: One-half of the tuition is due on or before August 15. One-quarter of the tuition is due on or before September 15. And the remaining quarter is due on or before October 15.

Spring tuition payment plans: One-half of the tuition is due on or before January 10. One-quarter of the tuition is due on or before February 15. And the remaining quarter is due on or before March 15.

Summer tuition payment plans: One-half of the tuition is due on or before May 15 for Second Degree Students, and the remaining half is due on or before June 15. For all other students, one-half of tuition is due on or before May 31, and the remaining half is due on or before June 30.

NOTE: If you are participating in any Payment Plan, there is a flat \$30 Payment Plan Deferment fee that will be applied per semester to any and all accounts not paid by the tuition due date. This means that if you do not elect a payment plan and your tuition is not paid on or before the tuition due date, you will be automatically placed in the Payment Plan and charged the Payment Plan Deferment fee. Please also be aware that if any of these payments are not made on or before the payment dates set forth, the student will be charged a \$50 late fee per payment.

***Summer full-time tuition = 12 credit hours or more taken in both summer sessions.**

*6 credit hours or more each summer session = Full-time

*4 credit hours each summer session = $\frac{3}{4}$ time

*2 credit hours each summer session = $\frac{1}{2}$ time

*This is an institutional standard only and is not used in calculating financial aid for the summer semester.

TUITION

100 and 200 Level Courses = \$386.00 per credit
300 and 400 Level Courses = \$587.00 per credit

FEES

- Application Fee \$35.00
- Deposit \$100.00
- Lab Fee \$200.00/year \$100.00/semester
- Tech Fee \$400.00/year \$200.00/semester
- Student Development Fee \$150.00/year \$75.00/semester
- ATI Testing \$380.00/year \$190.00/semester
- Graduation Fee \$150.00 (final semester only)

DORM ROOMS

- Room Deposit \$50.00
- Single \$2,000.00/semester
- Double \$1000.00/semester
- Triple \$800.00/semester

OTHER FEES (if applicable)

- Late Payment Fee ----- \$50 (noted above)
- Late Registration Fee ----- \$10
- Payment Plan II ----- \$30 (noted above)
- Tuition Refund (previously Withdrawal Fee) ----- See definition
- Transcript Fee** ----- \$5

MISCELLANEOUS ADDITIONAL FEES – To be paid by student (Not included in Tuition or Fees)

- Uniforms and Accessories ----- \$300
 - Books/Supplies ----- \$2,000 - \$2,500
 - Laptop ----- \$500 to \$2,500
 - Malpractice/Liability Insurance ----- \$29 annually
 - Course Proficiency Fee ----- \$25 per test
 - Cap & Gown ----- \$40 (final semester only)
 - NCLEX-RN Application/License ----- \$389 (final semester only)
- (Actual amounts depend on prices at time of purchase)

*Subject to change without notice

**No charge for currently enrolled students up to a maximum of three official and unofficial transcripts

Bachelor of Science in Nursing Second Degree Accelerated BSN Track Tuition and Fee Schedule*

All correspondence regarding billing will be done electronically. It is the responsibility of the student to check his/her email and CAMS portal regularly to ensure their balances are being paid.

Tuition and fees are due and payable at the time of billing unless alternative arrangements have been agreed upon with the College Bursar. All College charges and credits for each semester are consolidated into one account for each student.

Fall tuition is due on or before August 15.

Spring tuition is due on or before January 10.

Summer tuition is due for Second Degree Students on or before May 15; and for all other students, tuition is due on or before May 31.

NOTE: If any of these dates fall on a holiday, the payment will be due on the following business day.

Fall tuition payment plans: One-half of the tuition is due on or before August 15. One-quarter of the tuition is due on or before September 15. And the remaining quarter is due on or before October 15.

Spring tuition payment plans: One-half of the tuition is due on or before January 10. One-quarter of the tuition is due on or before February 15. And the remaining quarter is due on or before March 15.

Summer tuition payment plans: One-half of the tuition is due on or before May 15 for Second Degree Students, and the remaining half is due on or before June 15. For all other students, one-half of tuition is due on or before May 31, and the remaining half is due on or before June 30.

NOTE: If you are participating in any Payment Plan, there is a flat \$30 Payment Plan Deferment fee that will be applied per semester to any and all accounts not paid by the tuition due date. This means that if you do not elect a payment plan and your tuition is not paid on or before the tuition due date, you will be automatically placed in the Payment Plan and charged the Payment Plan Deferment fee. Please also be aware that if any of these payments are not made on or before the payment dates set forth, the student will be charged a \$50 late fee per payment.

***Summer full-time tuition = 12 credit hours or more taken in both summer sessions.**

*6 credit hours or more each summer session = Full-time

*4 credit hours each summer session = $\frac{3}{4}$ time

*2 credit hours each summer session = $\frac{1}{2}$ time

*This is an institutional standard only and is not used in calculating financial aid for the summer semester.

TUITION

100 and 200 Level Courses = \$386.00 per credit
300 and 400 Level Courses = \$587.00 per credit

FEES

- Application Fee \$35.00
- Deposit \$100.00
- Lab Fee \$200.00/year \$100.00/semester
- Tech Fee \$400.00/year \$200.00/semester
- Student Development Fee \$150.00/year \$75.00/semester
- ATI Testing \$380.00/year \$190.00/semester
- Graduation Fee \$150.00 (final semester only)

DORM ROOMS

- Room Deposit \$50.00
- Single \$2,000.00/semester
- Double \$1000.00/semester
- Triple \$800.00/semester

OTHER FEES (if applicable)

- Late Payment Fee ----- \$50 (noted above)
- Late Registration Fee ----- \$10
- Payment Plan II ----- \$30 (noted above)
- Tuition Refund (previously Withdrawal Fee) ----- See definition
- Transcript Fee** ----- \$5

MISCELLANEOUS ADDITIONAL FEES – To be paid by student (Not included in Tuition or Fees)

- Uniforms and Accessories ----- \$300
 - Books/Supplies ----- \$2,000 - \$2,500
 - Laptop ----- \$500 to \$2,500
 - Malpractice/Liability Insurance ----- \$29 annually
 - Course Proficiency Fee ----- \$25 per test
 - Cap & Gown ----- \$40 (final semester only)
 - NCLEX-RN Application/License ----- \$389 (final semester only)
- (Actual amounts depend on prices at time of purchase)

Tuition and Fee Definitions

Application Fee: Covers the cost of establishing the applicant's file. This fee is nonrefundable.

Deposit Fee: Provides assurance of prospective student's intent to enroll in Methodist College of Nursing. This fee will be applied to the first tuition bill and is nonrefundable.

Tuition: Guarantees the student's enrollment into the program and courses of choice; entitles student to College services from the date of payment through the end of that enrollment period.

NOTE: Summer full-time tuition = 12 credit hours or more taken in both summer sessions.

ATI Testing Fee: Covers the cost of required standardized testing of nursing knowledge.

Laboratory Fee: Covers the cost of the disposable equipment and supplies used in laboratory classes and in the Learning Resource Center.

Technology Fee: Covers the use and support of educational technology.

Student Development Fee: Covers the costs associated with providing certain student activities.

Late Registration Fee: Covers the cost to register after course registration has closed.

Transcript Fee: Covers the cost involved in the issuance of each transcript.

Late Payment Fee: The amount assessed when the unpaid balance is not received by the due date.

Payment Plan: An option to pay all tuition and fees before the first day of class or to pay 50% of tuition and fees before the first day of class and the remaining balance in two equal monthly installments.

Residence Hall Room Fee: Covers the cost for a College residence hall room.

Graduation Fee: Covers graduation administrative costs (cap and gown expenses are not included).

Miscellaneous Additional Fees: Paid to sources other than the College.

- ***Uniforms and Accessories:*** Uniforms, shoes, hose, stethoscopes, and other equipment. Cost varies.
- ***Books and Supplies:*** Cost varies each semester.
- ***Laptop:*** See "Minimum Laptop Computer Specifications" in this Handbook.
- ***Malpractice/Liability Insurance:*** Required for admission to MCON and renewed annually.
- ***Course Proficiency Fee:*** Amount student pays to take the written or performance examination to meet criteria for waiver of selected BSN course(s).
- ***Cap and Gown:*** The cost of cap and gown for graduation ceremony; paid in last semester only.
- ***NCLEX-RN Application:*** The cost to apply to sit for the NCLEX-RN; paid in last semester only.

*Subject to change without notice

**No charge for currently enrolled students up to a maximum of three official and unofficial transcripts

RN-BSN Track Tuition and Fee Schedule*

All correspondence regarding billing will be done electronically. It is the responsibility of the student to check his/her email and CAMS portal regularly to ensure their balances are being paid.

Tuition and fees are due and payable at the time of billing unless alternative arrangements have been agreed upon with the College Bursar. All College charges and credits for each semester are consolidated into one account for each student.

Fall tuition is due on or before August 15.

Spring tuition is due on or before January 10.

Summer tuition is due for Second Degree Students on or before May 15; and for all other students, tuition is due on or before May 31.

NOTE: If any of these dates fall on a holiday, the payment will be due on the following business day.

Tuition

100 and 200 Level Courses = \$386.00 per credit
300 and 400 Level Courses = \$587.00 per credit

Fees

Application Fee (non-refundable)-----\$35
Deposit Fee-----\$100
Tuition Refund (previously Withdrawal Fee) --See definition below
CLEP Fees-----Cost varies by Exam
Excelsior Fees -----Cost varies by Exam
Technology Fee -----\$360/year - \$180/semester
Late Registration Fee -----\$10
Transcript Fee** -----\$5
Late Payment Fee -----\$50
Graduation Fee (does not include cap & gown) \$150

Additional Miscellaneous Fees

Lab Coat with MCON Emblem -----\$50 (approximately)
Books/Supplies -----\$1,000
Laptop-----\$500 to \$2,500
Cap and Gown -----\$40 (final semester only)
(Actual amounts depend on prices at time of purchase)

*Subject to change without notice

**No charge for currently enrolled students up to a maximum of three official and unofficial transcripts

RN-BSN track Tuition and Fee Definitions

Application Fee: Covers the cost of establishing the applicant's file. This fee is nonrefundable.

Deposit Fee: Provides assurance of prospective student's intent to enroll in the Methodist College of Nursing. This fee will be applied to the first tuition bill and is nonrefundable.

Tuition: Guarantees the student's enrollment into the program and courses of choice; entitles student to Methodist College of Nursing services from the date of payment through the end of that enrollment period.

Technology Fee: Covers the use and support of educational technology.

Late Registration Fee: Covers the cost to register after course registration has closed.

Transcript Fee: Covers the cost involved in the issuance of each transcript.

Late Payment Fee: The amount assessed when the unpaid balance is not received by the due date.

Graduation Fee: Covers graduation administrative costs (cap and gown expenses are not included).

Miscellaneous Additional Fees: Paid to sources other than the College.

- *Lab Coat with MCON Emblem*: To wear during clinical experiences. Cost varies.
 - *Books and Supplies*: Cost varies by semester.
 - *Laptop*: See "Minimum Laptop Computer Specifications" in this Handbook.
 - *Cap and Gown*: The cost of cap and gown for graduation ceremony.
-

Refund Processing Policy

Refund requests will be submitted for processing within 10 business days of loan disbursement. Please allow for additional time for check printing, processing, and mailing. It is the responsibility of the student to make sure the "billing" address listed in CAMS is correct, as all checks are mailed to this address. There will be no in-person check pickups allowed.*

Tuition Refund Policy (previously called Withdrawal Fee)

Full refunds will be made for individual classes cancelled by Methodist College of Nursing. Full refunds will also be granted to those students dropping a course before the first scheduled day of classes. A refund time line for weeks one through three of each semester is listed below. No refund will be granted for classes dropped after the end of the third week of classes.*

Tuition Refund Schedules per Program for the 2011-2012 Academic Year are as follows:

RN-BSN Program		Traditional BSN Program		BSN Second-Degree Program	
Fall 2011		Fall 2011		Fall 2011	
Last Refund Date	Refund Percentage	Last Refund Date	Refund Percentage	Last Refund Date	Refund Percentage
8/22/2011	100	8/22/2011	100	8/21/2011	100
8/29/2011	90	8/29/2011	90	8/28/2011	90
9/5/2011	75	9/5/2011	75	9/4/2011	75
9/12/2011	50	9/12/2011	50	9/11/2011	50
9/13/2011	0	9/13/2011	0	9/12/2011	0
Spring 2012		Spring 2012		Spring 2012	
Last Refund Date	Refund Percentage	Last Refund Date	Refund Percentage	Last Refund Date	Refund Percentage
1/17/2012	100	1/16/2012	100	1/15/2012	100
1/24/2012	90	1/23/2012	90	1/22/2012	90
1/31/2012	75	1/30/2012	75	1/29/2012	75
2/7/2012	50	2/6/2012	50	2/5/2012	50
2/8/2012	0	2/7/2012	0	2/6/2012	0
Summer 2012		Summer 2012		Summer 2012	
Last Refund Date	Refund Percentage	Last Refund Date	Refund Percentage	Last Refund Date	Refund Percentage
5/14/2012	100	6/4/2012	100	5/20/2012	100
5/21/2012	90	6/11/2012	90	5/27/2012	90
5/28/2012	75	6/18/2012	75	6/3/2012	75
6/4/2012	50	6/25/2012	50	6/10/2012	50
6/5/2012	0	6/26/2011	0	6/11/2012	0

*Students withdrawing completely from Methodist College of Nursing should refer to Financial Aid Policy (Return to Title IV Policy) in the catalog.

Financial Aid

Overview

Our mission is to provide all students (new, continuing or re-entering) with the information and guidance you need to successfully navigate the financial aid process. Your graduation success is our goal. Understanding financial aid options is part of that success.

The financial aid office is the first point of contact for discussing any aspect of financing a college education at Methodist College of Nursing. Our primary responsibilities include:

- Discussing and facilitating externally funded tuition payment options (federal and state student loans, grants, scholarships and work study)
- Conducting loan entrance and exit interviews
- Completing certifications for federal Pell Grants and federal Direct Loans credit to a student's tuition and fee account
- Administering federal work study programs
- Monitoring a student's academic progress and enrollment/withdrawal status
- Administering Veterans' education programs
- Notifying students about outside scholarship options

Students at Methodist College of Nursing interested in applying for federal financial aid must complete a Free Application for Federal Student Aid (FAFSA) form before any determination of aid is available. Eligibility for aid is determined by an analysis of the information provided on the FAFSA and is made by federal and state agencies who disburse financial aid.

In the school release section of your FAFSA, you must indicate Federal school code **006228** for the Methodist College of Nursing.

Financial Aid Programs

Methodist College of Nursing offers several financial aid programs to assist students in meeting their educational costs. The following is a brief overview of the most common programs.

Federal Pell Grants

Federal Pell Grants are awarded only to undergraduate students who have not earned a bachelor's or a professional degree. The Federal Pell Grant is not a loan, and does not need to be repaid. To be considered for this grant program, a student must complete the Free Application for Federal Student Aid.

Federal Supplemental Educational Opportunity Grants

The Federal Supplemental Educational Opportunity Grant (FSEOG) program is for

undergraduates with exceptional financial need. Pell Grant recipients with the lowest expected family contributions (EFCs) will be considered first for a FSEOG. Just like Pell Grants, the FSEOG does not have to be repaid. To be considered for this grant program, a student must complete the Free Application for Federal Student Aid.

Federal Work Study

Federal Work-Study (FWS) provides part-time jobs for undergraduate and graduate students with financial need, allowing them to earn money to help pay education expenses. The program encourages community service work and work related to the recipient's course of study. To be considered for this aid program, a student must complete the Free Application for Federal Student Aid.

Federal Direct Stafford Loans

Direct Stafford Loans, from the William D. Ford Federal Direct Loan (Direct Loan) Program, are low-interest loans for eligible students to help cover the cost of higher education. Direct Stafford Loans include both Direct Subsidized Loans and Direct Unsubsidized Loans. To be considered for this loan program, a student must complete the Free Application for Federal Student Aid.

Federal Direct PLUS Loans for Parents

Parents of dependent students may apply for a Direct PLUS Loan to help pay their child's education expenses as long as certain eligibility requirements are met. Please contact our office for information on how to apply for this program.

Illinois Monetary Award Program

The Monetary Award Program (MAP) provides grants to Illinois residents who attend approved Illinois colleges and demonstrate financial need. To be considered for this grant program, the student must complete the Free Application for Federal Student Aid (FAFSA).

Satisfactory Academic Progress

General Information

Eligibility for financial aid requires that a student meets the Satisfactory Academic Progress policy.

The purpose of Methodist College of Nursing's policy on "Satisfactory Academic Progress" is to ensure that all students meet the federal, state, and local financial assistance / veteran's benefits programs requirements for eligibility. (Title 34, Section 668.32f and 688.34).

MCON evaluates all students for compliance with this policy at the end of each academic semester, and at the time of disbursement of any benefits. The policy consists of a completion requirement, a grade point average requirement, and a maximum time frame requirement. This policy supersedes all previous policies.

Completion Requirement

MCON students must complete at least 67% of their hours attempted in either the semester or cumulatively. A student who fails to complete 67% of their hours attempted during either the semester or cumulatively will be placed on Satisfactory Academic Progress Probation. If the student fails to complete at least 33% of their attempted hours in either the semester or cumulatively, the student is placed on Satisfactory Academic Progress Denial.

Hours attempted include all financial aid eligible courses. For the purposes of this policy, completion is defined as grades of A, B and C. Hours attempted with grades of D, F, W, or I are not considered successful completion grades.

Grade Point Average Requirement

MCON students must have a cumulative grade point average of 2.0 (C average) at the end of each semester of attendance. Only grades earned at MCON are counted in this requirement. Grades are calculated for all eligible courses. This requirement evaluates the students' cumulative grade point average, not the semester grade point average. Students who fail to maintain a cumulative grade point average of 2.0 will be placed on Satisfactory Academic Progress Denial. There is no probationary status for the Grade Point Average Requirement.

A nursing course may only be repeated one time. Withdrawing from a nursing course with a W is considered an attempt. A student may meet the required Completion and Grade Point Average Requirements as listed above and still be placed on Satisfactory Academic Progress Denial if they fail to successfully complete a nursing course during the second attempt.

Additionally, students are only allowed to repeat grades of D or lower in nursing courses. A student who earns a D or lower in their second course is immediately placed on Satisfactory Academic Progress Denial upon the courses completion.

Maximum Time-Frame Requirement

The maximum time-frame a student has to complete their degree is equal to 150% of the hours required for the completion of the degree. As a general rule, the Bachelor of Science in Nursing degree requires 122 credit hours, and financial aid recipients have a maximum of 183 credit hours attempted. In this instance, the student would be placed on Satisfactory Academic Progress Probation when his/her attempted hours exceed 150 hours. This student would be placed on Satisfactory Academic Progress Denial after attempting 183 hours. Hours transferred to MCON from previous institutions are included in this requirement.

The maximum time frame requirement is a Title IV requirement only. This rule does not apply to veteran's benefits.

A student seeking a second bachelor's degree will only have his/her transfer hours from the first degree counted in their total hours attempted.

For example, a student who completed a Bachelor of Arts Degree at another college would start out with only those hours that transferred to MCON before taking a single class towards his/her second degree counted in the Maximum Time-Frame Requirement.

Satisfactory Academic Progress Probation

A student may stay on Satisfactory Academic Progress Probation for one semester. If the student fails to meet good standing in the subsequent semester, he/she is automatically placed on Satisfactory Academic Progress Denial status. A student is eligible for all types of educational benefits while on Satisfactory Academic Progress Probation.

Satisfactory Academic Progress Denial

A student is ineligible for any type of educational benefits while on Satisfactory Academic Progress Denial. The student may appeal the Satisfactory Academic Progress Denial status, (see student appeals).

Student Appeals for SAP

A student may write to appeal his/her Satisfactory Academic Progress Denial. The letter should be written to the Director of Student Financial Assistance and include the following; a narrative explaining why the student failed to meet the Satisfactory Academic Progress Policy requirements, a description of what the student will do to ensure he/she will regain good standing, and any other relevant supporting documentation.

If the appeal is denied, the student may further appeal by making an appointment with the Dean of Enrollment Management. The Dean of Enrollment Management will render a decision within 7 working days of receiving the request from the student. All decisions made by the Dean of Enrollment Management Committee are final.

If the appeal is granted, the student will be placed on Satisfactory Academic Progress Probation. The student's status will continue to be reviewed after each semester. The goal is that the student will regain good standing within the following semester. If the student does not regain good standing within the semester, the Director of Student Financial Assistance will place the student on Satisfactory Academic Progress Denial again.

NOTE: A student may be allowed to enroll in classes at MCON, even though he/she is on Satisfactory Academic Progress Denial. Satisfactory Academic Progress is a Financial Aid, Scholarships & Veteran's Benefits Policy, not a registration or admissions policy. If a student is on Satisfactory Academic Progress Denial status, he/she will not be automatically dropped from his/her classes. Neither paying for your own classes or sitting out for an enrollment period is sufficient for a student to re-establish eligibility for Financial Aid.

Campus Life

Residence Life

The Residence Hall is a cozy community living arrangement located on the 3rd, 4th, and 5th floors of the Methodist East Campus building, the same building where the College administrative offices and classrooms are located. We offer students double rooms and private baths, which provide students with opportunities for private time for studying. Common areas include a community TV lounge, community study lounge which is equipped with computers, on campus laundry facilities, as well as a community kitchen. It's "cook and clean your own" in the community kitchen, however, we also provide a meal plan in the Methodist Medical Center cafeteria for students who prefer to opt for prepared meals.

The Residence Halls are staffed by six Resident Advisors (RA) who are responsible for facilitating a safe and secure community environment conducive to supporting the Methodist College of Nursing Mission.

Room Assignments for Residential Life

Priority for room assignments for 2011-12 will be based on the following factors;

- Assignment is dependent upon space availability.
- First priority is extended to current residents.
- Continuing senior residents have priority over continuing junior residents; continuing junior residents have priority over continuing sophomore residents; continuing sophomore residents have priority over continuing freshmen residents.
- Continuing residents from farther away from the campus have priority over continuing residents from the local areas.
- Incoming students have priority over continuing students who do not currently reside on residence life floors.
- Incoming students from farther away from the campus have priority over incoming students from the local area.
- Incoming freshmen students have priority over incoming sophomores; incoming sophomores have priority over incoming juniors; incoming juniors have priority over incoming seniors.

Student Activities

Student Government Association (SGA)

The MCON Student Government Association (SGA) is compiled of MCON students who serve as representation for their peers to enhance their experience at Methodist, both inside and outside of the classroom. SGA is a governing organization of the student body and serves to meet the needs of their constituents.

Student Nurses' Association (SNA)

MCON SNA serves as the local chapter of the National Student Nurses' Association. There are a variety of opportunities for students to develop themselves as both leaders and future professional nurses. The SNA meets regularly throughout the academic year and invites new students to attend a meeting for an introduction to the SNA.

Nursing Honor Society

Students learn to articulate Methodist College of Nursing's vision, mission and core values and meet strategic and program goals by participating in the Nursing Honor Society, which encourages scholarship, service and research. To qualify for Methodist College of Nursing

(MCON) Honor Society, a student must maintain a MCON overall GPA of 3.0. In addition, student candidates must demonstrate superior academic achievement, academic integrity, and professional leadership potential to obtain induction into MCON's Honor Society.

Other Activities

- Softball League.
- Volleyball League.
- Peoria Chiefs Game.

For more information on these and many other events, please visit the Coordinator for Student Life located on the 6th floor of the Methodist College of Nursing building.

Support Services

Campus Safety

Methodist College of Nursing strives to provide a safe and secure campus and to keep the public informed about crime on its campus in accordance with the requirements of Public Law 101-542, Title II, 1990 (Clery Act). Campus crime statistics are reported annually on the MCON website.

The Security Department of Methodist Medical Center is authorized to help maintain a safe Methodist College of Nursing environment by protecting life and property. Security officers complete a 40-hour training program in security law and procedures and have the same arrest powers as private citizens, in accordance with Illinois law.

Any suspicious activity or serious crime should be reported immediately to the Security Department. The Chief of Security will notify Methodist College of Nursing community in the event of the threat of a serious crime or if a serious crime occurs.

The Security Department's Control Room is located in the main lobby of the Medical Center. Uniformed officers are available 24 hours every day of the year to respond to complaints and dispatch requests. The dispatcher uses a two-way radio to communicate with security officers on duty. Individuals concerned about his/her personal safety may request an escort from the Security Department at any time. An

officer will walk with or drive the individual to his/her destination.

In addition, campus security is maintained by using security cameras to monitor entrances, parking lots and garages. This is monitored by the security control room located in the main lobby of Methodist Medical Center.

Campus Security maintains visibility by patrolling the campus regularly on foot or in marked security vehicles. To help maintain a safe and secure campus, reasonable precaution for one's safety needs to be exercised by faculty, students, staff, and visitors.

Academic Advising

Academic Advising Overview

Students are assigned a faculty advisor upon provisional admission in Methodist College of Nursing. The advisor provides academic advisement, monitors student progress throughout the BSN program, and makes appropriate referrals for personal counseling as needed.

Students should meet with his/her faculty advisor on a regular basis particularly if he/she is experiencing academic difficulty. Students are required to meet with his/her advisors and obtain their approval to be able to register each semester. Advisor office hours are posted on his/her office door.

Students or advisors may request a change of advisor/advisee with written notification to the Dean of Academic Affairs.

Academic Advisement Procedure

- Each student will be assigned an advisor upon provisional acceptance to MCON. The advisor should contact the student prior to orientation.
- Advisors should meet with their advisees at midterm and prior to registration for the following term.
- If the student is having difficulty, the advisor will instruct the student on remediation. The advisor will develop a plan of how they will remediate and how they will achieve success. The advisor and advisee will meet on a mutually agreed upon schedule to monitor their progress.

Personal Counseling

In an effort to promote total wellness, Methodist College of Nursing recognizes that students may need counseling services to better manage personal or student-related stress. Methodist College of Nursing employs a full-time counselor to assist students. They are located on the 6th floor of the Methodist College of Nursing building

Child Care

Students may use the Methodist Medical Center's child-care facilities. The Child Care Center is located adjacent to Methodist College of Nursing. Contact the Director of Child Care at (309-672-8694) for additional information.

Learning Resource Centers

Methodist College of Nursing has two Learning Resource Centers (LRC). Each is equipped to provide students with opportunities to acquire and enhance nursing skills in a variety of clinical simulation settings. This is accomplished through the use of instructional technology,

the application of critical thinking scenarios, and other methods that facilitate clinical assessment and decision-making in nursing practice. Students are supervised by experienced professional staff and faculty while gaining confidence and competence in skill development in the LRC setting. Both LRC's are open seven days per week when the college is open, for individualized practice and group instruction. The LRC's are staffed by full-time experienced BSN and masters prepared nurses.

The LRC's may be closed during College holidays. Please check the LRC for hours on those dates.

Library

The Library is located in the lower level of the Methodist College of Nursing and is open 24/7 except for the week between Christmas and New Year's Day. Student access to the Library between the hours of 4:30 p.m. – 8:00 a.m. is gained by swiping his/her MCON identification card.

The Library holdings include a variety of books, nationally-recognized journals, numerous multimedia programs, computers, and electronic databases that support the nursing curriculum. Borrowing privileges are extended to faculty and students by other area college and university libraries such as Bradley University, Illinois Central College, and the University of Illinois College of Medicine at Peoria. Access to other libraries is provided through Methodist College of Nursing's membership in the Heart of Illinois Library Consortium and the Alliance Library System. The library is staffed by a full-time experienced librarian and student library assistants to help faculty/students/staff with their literature searches.

Center for Student Success

The Center for Student Success (CSS) offers free academic assistance to all MCON students in a welcoming and supportive environment. The CSS staff is extensively trained in providing

supplemental instruction in subjects such as Mathematics, Biological and Physical Sciences, Reading and Writing. CSS tutors are available to assist students via one-on-one tutoring, testing, workshops, and skills assessments. CSS facilities include several 24 hour study lounges, tutor offices, and a Testing Center. CSS services also include paper formatting/-editing, plagiarism and citation checks, Compass and ATI testing, VARK administration, and remediation programs in Math, English, and Reading, as well as overall assistance in nursing coursework.

The Center for Student Success is located on the 6th floor (601-607) and tutors are available Monday through Friday from 8:00am - 4:30pm.

Career Placement

All students are assisted with career placement prior to graduation from Methodist College of Nursing. MCON has a full-time employee who works with students to assist in career placement. In addition, nurse recruitment fairs attended by area hospitals and health care institutions provide the students with a variety of job opportunities.

Disability Services

Services are offered for students with disabilities, including accommodations and limited auxiliary services. It is the responsibility of students with disabilities to provide documentation. A student with a disability who believes he or she needs an accommodation should visit the 6th floor of the MCON building.

Computer Laboratory

There are two computer labs in the lower level of MCON that are equipped with personal computers, printers, and audiovisual aids. Access to the Internet and a variety of software including interactive computer learning programs are available. One lab is open 24-hours.

No food or drink are permitted in the Computer Laboratories.

Laptop Requirements for Students

Each student entering Methodist College of Nursing is required to own a laptop. Those who do not have 24/7 access to the Internet and a laptop are at a disadvantage.

The computer must be a laptop due to wireless access on campus, small group study or project work, and flexibility for work space setup.

The entire Methodist College of Nursing campus is wireless. For financial aid purposes, the price of the new laptop can be added into the total price of educational costs.

Graduate School Information

For students interested in pursuing a graduate education, MCON provides graduate school information as well as hosting graduate school recruiters as appropriate.

The Academic Program

Academic Purpose and Goals

Purpose

Academic Affairs is dedicated to providing educational programs and support services which prepare students to be competent healthcare practitioners, responsible leaders and productive citizens in a democratic society. This is accomplished within a culture of excellence that emphasizes and supports student engagement in and responsibility for learning and faculty commitment to excellence in teaching, scholarship and service. The educational environment recognizes the diverse needs of students and promotes the holistic development of each student. An important element of this mission is to prepare students for life- long learning, advanced studies and employment in a complex, diverse and rapidly changing world.

Goals

- Provide a foundation in general education to support and contribute to the learning outcomes of all academic degree programs.
- Provide academic degree programs that are responsive to a changing environment in healthcare and in society.
- Promote excellence in academic offerings through curricular development, delivery, evaluation and improvement.
- Promote academic competence through a learning environment that promotes immersion, active learning and integrated learning experiences as well as fostering intellectual, interpersonal and civic engagement.
- Sustain a learning environment that recognizes and is responsive to student needs in promoting achievement and student learning in order to facilitate academic engagement, progression, and persistence to graduation.
- Provide resources through academic support services to foster development of skills that promote student success and life-long learning. (Advising)
- Encourage faculty contributions to the body of knowledge of their discipline and/or of education in the discipline through scholarship and research.
- Support and encourage professional development opportunities for faculty to grow in subject matter expertise, pedagogical knowledge, technology integration and ability to promote learning within a diverse student population.
- Foster professional development and life-long learning for graduates and healthcare practitioners through continuing education programming.
- Establish community, educational and business partnerships/linkages to enhance student learning opportunities and contribute to the welfare of the College and the healthcare needs of the community.

Academic Support Policies, Information, & Procedures

The Academic Program

The academic program is focused on ethical, professional and intellectual development, respect and concern for human values, and the joy of creativity and discovery. Emphasis is on developing the whole person by encouraging a lifelong dedication to both learning and service to others. The program strives to cultivate integrity, intellectual and moral courage, responsibility, fairness, and compassion. The undergraduate academic program prepares graduates to be practitioners of healthcare and productive and responsible members of a democratic society.

Outcomes of the Academic Program

Graduates of the undergraduate academic program will:

Demonstrate mastery of knowledge, skills and readiness for a career in a healthcare discipline.

- (See academic degree program outcomes).

Apply information literacy skills necessary to support continuous, lifelong learning:

- Locate needed information from a variety of sources;
- Critically evaluate information and sources;
- Situate primary sources in their historical context and articulate their continued relevance;
- Manage, synthesize and integrate information;
- Use information legally and ethically.

Demonstrate effective communication and comprehension skills.

- Read and listen with comprehension;
- Speak and write clearly using standard English;

- Interact cooperatively with others using both verbal and non-verbal means;
- Demonstrate information processing through basic computer skills.

Demonstrate the ability to use quantitative reasoning in a variety of contexts:

- Differentiate among interpretations of quantitative information, including causality and correlation;
- Interpret quantitative measures, including statistical significance and descriptive statistics (mean, median, mode);
- Utilize quantitative measures (electronic, graphical, tabular or numerical) to make informed decisions in a variety of contexts.

Examine relationships in diverse and complex environments

- Develop an awareness of self as an individual member of worth and of a multicultural global community;
- Demonstrate an awareness of the relationship of the individual to the biological and physical environment;
- Recognize the relationship of the individual to human heritage and culture.

Demonstrate professional ethics and practice academic integrity.

- Make choices based upon awareness of ethics and differing perspectives/ideas;
- Use appropriate search strategies and resources to access, assess, manage and use information;
- Demonstrate intellectual and personal honesty in decision making, learning and research;
- Demonstrate respect for self, for others, for scholarship and research, for the educational process and for our intellectual heritage.

Utilize research and critical thinking to solve problems.

- Make connections in learning across the disciplines and make logical conclusions;
- Demonstrate problem solving through interpreting, analyzing, summarizing, and/or integrating a variety of materials;
- Use mathematics to organize, analyze, and synthesize data to solve a problem.

Demonstrate competencies, skills, attributes and values necessary for successful participation in a diverse, pluralistic and increasingly interdependent world.

- Will be able to work effectively in teams;
- Demonstrate social and collaborative skills necessary for effective functioning in collective endeavors;
- Use collaboration and group processes to achieve a common goal;
- Demonstrate an understanding of civic society and culture in the areas of citizen rights and responsibilities;
- Understand the role of diversity in modern society;
- Understand the nature of ethical decision-making;
- Demonstrate a commitment to lifelong learning.

Academic Progression and Non-Progression

A. Progression Status:

- *In Good Standing*

At the end of the semester, a student must have earned a cumulative grade point average of at least 2.0. Students must maintain a 2.0 GPA to progress in the MCON program.

To progress from the Lower Division to the Upper Division of the Pre-licensure BSN program, the student must have completed all Lower

Division courses and must have a minimum cumulative GPA of 2.0.

The student's faculty advisor must certify in writing to the Registrar that the student is eligible to progress. Exceptions to this progression policy can only be approved by the Dean of Academic Affairs or her designee.

All nursing courses must be completed satisfactorily with a grade of "C" (77) or better before a student can progress in the nursing program.

A grade of "D" will be considered a passing grade in General Education and/or Health Sciences courses as long as the student maintains a 2.0 GPA overall.

Courses must be completed in the designated sequence of the designed curriculum.

Online student learning requires 3 – 4 hours of student involvement per credit hour per week.

- *Academic Probation*

A student will be placed on academic probation at the end of a semester if the semester grade point average is less than 2.0, or a grade of "D" or "F" is earned in a nursing course or a grade of "F" is earned in a general education course.

"Academic Probation" will be posted on the student's academic record.

- *Removal from Academic Probation*

The student is removed from academic probation at the

completion of the semester when the cumulative GPA is 2.0 or higher. This must be done within two (2) semesters of being placed on *Academic Probation*.

“Returned to Good Standing” will be posted on the student’s academic record.

B. Non-Progression Status:

- *Academic Dismissal*

A student will be academically dismissed for any one of the following reasons:

- Failure to earn a “C” or better in a repeated nursing course.
- Failure to earn a “C” or better in two or more nursing courses.
- Failure in a second nursing course subsequent semesters.
- Second withdrawal from a nursing single course.
- Two consecutive semesters of a cumulative GPA of less than 2.0.
- Violations of the Academic Integrity and Honesty Policy.

“Academic Dismissal” will be posted on the student’s academic record.

The student may apply for readmission after one year following academic dismissal. To reapply for admission, the student must complete the *Application for Readmission* which is available through the Office of Admissions. Reapplication following academic dismissal does not guarantee readmission to the College. If the student is accepted for readmission following dismissal, the student will be placed on academic probation. Refer to the policy for *“Readmission to the College.”*

The RN-BSN students should contact the Admission’s Office regarding the Readmission Process.

Registration and Enrollment Policies

Course registration is managed through the Office of the Registrar. Faculty advisors are available during the registration period to assist students in their selection of courses. Registration may be completed through the fifth day of the semester.

To register, students should:

1. Review the course schedule
2. Meet with their advisor for an enrollment review
3. Register online through the CAMS student portal during the assigned registration period.

Students are classified according to the number of hours he/she is enrolled in a semester as follows:

- Full-time (12 hours/semester)
- Three-quarter time (9 - 11 hours/semester)
- Half-time (6 - 8 hours/semester)
- Less than half-time (1- 5 hours/semester)

Academic Standards

A class hour is defined as one period of 50 minutes. If the faculty member does not appear for class within fifteen (15) minutes, one student on behalf of his/her classmates should contact the Office of the Dean of Academic Affairs to determine what course of action to follow.

Clinical Hours – Three (3) clock hours of clinical practice time equals one credit.

Grading Scale

In nursing courses, students must earn a grade of “C” for nursing theory and an “S” for nursing clinical to receive a passing grade. In general education and/or health science classes, a grade of “D” is considered a passing grade as long as a 2.0 overall GPA is maintained. Students must maintain a 2.0 GPA to progress.

The grading system used at Methodist College of Nursing is:

Letter Grade	Quality Points Per Unit
A	4.00
B	3.00
C	2.00
D	1.00
F	0.00 (Computed in GPA)
I	0.00 (Not computed in GPA)
S	0.00 (Not computed in GPA)
U	0.00 (Not computed in GPA)
W	0.00 (Not computed in GPA)

The following grading scale will be used for all **NURSING** classes:

- A = 93 – 100%
- B = 85 – 92%
- C = 77 – 84%
- D = 69 – 76%
- F = 68% and below

Grading Standards

- I Incomplete** – The grade of “I” is reported by the instructor. The student must complete the work by the date that grades are due for midterm of the next semester as indicated by the appropriate Academic Calendar or the final grade of “F” will be issued.
- S Satisfactory** - “S” correlates to letter grade of “C” or higher.
- U Unsatisfactory** - “U” correlates to letter grade of “D” or lower.
- W Withdrawal** – “W” Withdrawal from a course. A student is permitted to withdraw from a course through the ninth week of a semester course and the instructor reports a grade of “W”. After the ninth week, the instructor reports a Letter grade of “A”, “B”, “C”, “D” or “F”, unless a Leave of Absence has been taken by the student in which case the instructor would issue the grade of “W”.
A final theory grade of “D” or below and a final clinical/lab grade of “U” are

considered failing grades. Both the theory and clinical/lab grades must be reported as passing to complete the course. If unsuccessful in either, both the clinical and theory must be repeated. A student can only repeat a course one time.

If the clinical component of the course is failed, the student automatically fails the course.

Incomplete Grades

The request for an Incomplete (“I”) grade must be originated by the student and approved by the Instructor for the course in question. If the Instructor agrees that the student has completed enough of the course and has a valid reason to request the Incomplete, he/she will support the request for the Incomplete (“I”) grade. The student must obtain the Incomplete Grade form from the Office of the Registrar, obtain approval from the Instructor and submit the signed form to the Office of the Registrar.

The last date to complete the course is the midterm of the next semester as indicated on the Academic Calendar. An Incomplete grade will become a grade of “F” if not completed by the specified date.

Adding/Dropping a Course

Students should refer to the Academic Calendar for add/drop dates specific to the program in which he/she is enrolled. Students must obtain approval from his/her advisor prior to adding or dropping any course.

RN-BSN track students must contact their Faculty Advisor or the Dean of Academic Affairs prior to adding/dropping any course.

Second Degree Accelerated BSN track students must contact the Second Degree Accelerated BSN track Coordinator prior to adding/dropping any course.

Administrative Drop/Add

While each student is responsible for ensuring that he/she is enrolled for the

appropriate courses, Methodist College of Nursing reserves the right to administratively add/drop students when the student fails to meet prerequisite requirements or when circumstances mandate.

Repeated Courses

Students may not receive credit for the same course twice. Repeated courses must be taken at Methodist College of Nursing. Students may not use a proficiency exam to replace a repeated course.

When a student repeats a course at Methodist College of Nursing, all grades earned in the course will be posted to the student's transcript and will be computed in the cumulative grade point average. An MCON nursing course may be repeated only once.

Grade Point Average (GPA) Calculation

The MCON grade point average is calculated only on courses completed at MCON. Transfer credits are not computed in the GPA. The GPA is calculated on all hours attempted and all hours earned and is based on the 4-point scale illustrated below:

Letter Grade	Quality Points Per Unit
A	4.00
B	3.00
C	2.00
D	1.00
F	0.00 (Computed in GPA)
I	0.00 (Not computed in GPA)
S	0.00 (Not computed in GPA)
U	0.00 (Not computed in GPA)
W	0.00 (Not computed in GPA)

Academic Semester Length and Credit

A semester is based on 15 weeks of classes in the fall and spring semesters.

Each academic credit is based on 15 clock hours of classroom instruction. Each academic credit is equal to 50 minutes of instruction per week.

Clinical and laboratory hours are computed on a ratio basis. Clinical credit hours are based on a ratio of 1:3 clock hours per clinical credit hour. Laboratory credit hours are computed on a ratio of 1:2 clock hours per laboratory credit.

Advisement Procedure

- Each student will be assigned an advisor upon provisional acceptance to MCON. The advisor should contact the student prior to orientation.
- Advisors should meet with their advisees at midterm and prior to registration for the following term.
- If the student is having difficulty, the advisor will instruct the student on remediation. The advisor will develop a plan of how they will remediate and how they will achieve success. The advisor and advisee will meet on a mutually agreed upon schedule to monitor their progress.

Graduation Requirements

Commencement exercises are held in December and May. All students will be assessed a graduation fee included in their final semester's fees.

Students wishing to participate in the commencement ceremony will purchase, at their own expense, a cap and gown from the vendor approved by the College. All students will receive their diploma, diploma cover and pin whether or not they attend the ceremony. A group picture of the graduating class, in cap and gown, will be taken in advance of the commencement ceremony. A student not wishing to participate in the ceremony must make arrangements with the Dean of Enrollment Management if they wish to be in the group picture.

Degree Completion Requirements

The Bachelor of Science Degree in Nursing is conferred when the following conditions have been met:

1. Completion of 122 credit hours in the required courses. The degree must be completed for each program per the following table:

	General Education	Health Sciences	Upper Division General Electives	Nursing Courses	Total Credit Hours	Total Years to Completion
Pre-Licensure BSN (4 year program)	45	5	6	66	122	7
Second Degree Accelerated	45	5	6	66	122	5
RN-BSN Track	58	-	-	64	122	5
Pre-Licensure BSN Completion Track*	58	-	-	64	122	5

*No Longer Accepting Applications

Failure to meet the time to degree requirements provided above will result in the individual having to reapply to the College of Nursing. In this situation, the readmitted student may be required to repeat previously completed coursework to earn the degree.

2. Achievement of a cumulative grade point average of 2.0 or higher on all College work with grades of "C" or above in all nursing courses leading to the Bachelor of Science degree in Nursing.
3. Completion of all required standardized achievement examinations.
4. Fulfillment of at least 25% of the degree credit requirements at Methodist College of Nursing.
5. All courses within the major must be completed at Methodist College of Nursing. Potential transfer of credits within the major may be considered upon review by the MCON President or Dean of Academic Affairs. Students must have at least 30 hours in their major to establish "residency" in their major.
6. Clearance of all indebtedness to Methodist College of Nursing, including the return of all materials borrowed from the College library.

Academic Honors and Awards

At Commencement, the following honors are presented to students who graduate with the highest cumulative grade point averages:

- Summa Cum Laude
Highest Distinction - 3.90-4.00
- Magna Cum Laude
High Distinction - 3.75-3.89

- Cum Laude
Distinction - 3.50-3.74

PRESIDENT OF THE COLLEGE'S LIST

At the end of each semester, the President of the College's List will be posted to recognize the academic progress for that semester. Students earn this honor by:

- Completing a minimum of 12-semester hour credits roster and

- Achieving a semester grade point average of 3.9 to 4.0.

DEAN'S LIST

Additionally, the Dean's List will be posted at the end of each semester. Students earn this honor by:

- Completing a minimum of 12-semester hour credits roster and
- Achieving a semester grade point average of 3.75 to 3.89.

Class Standing

Students are classified according to the total number of semester hours completed including transfer semester hours. Students are classified as follows:

- Freshman 0–30 semester hours completed
- Sophomore 31–57 semester hours completed
- Junior 58–89 semester hours completed
- Senior 90–122 semester hours completed

General Education Requirements

Core Curriculum

A general education fosters the knowledge, skills, and values essential to all academic disciplines and encourages the pursuit of lifelong learning. General education outcomes are sought in the core academic courses **required** of all students regardless of the major or professional program.

Outcomes of the General Education Core Curriculum (Core Competencies)

Communicate effectively

- Speech – 3 credit hours
- English Composition – 6 credit hours

Think critically

- PHIL 111 – Logic – 3 credit hours
- Humanities – 3 credit hours

Apply the concepts and methods of mathematics and the natural sciences

- MATH 110 – Concepts of Math – 3 credit hours
- MATH 111 – Statistics – 3 credit hours
- BIOL 145 – Anatomy and Physiology I – 4 credit hours
- BIOL 146 -- Anatomy and Physiology II – 4 credit hours
- BIOL 210 – Microbiology – 4 credit hours

Develop insights into personal and group behavior including the development of an understanding and appreciation of diverse cultures

- SOC 110 – 3 credit hours
- PSYCH 110 – 3 credit hours
- Behavioral Sciences Elective – 3 credit hours

Understand creative works as expressions of individual and human values within historical and social contexts

- Fine Arts -- 3 credit hours

The Nursing Programs

Four-Year Pre-Licensure BSN

General Information

The Four-Year Degree Track is designed for anyone who is interested in earning a Bachelor of Science in Nursing degree.

The Four-Year Bachelor of Science in nursing degree is a traditional college degree. The student enrolls in Methodist College of Nursing (MCON) in this program and takes both the general education and nursing courses required for the degree. All course work, with the exception of science labs, will be taken at MCON. Science lab courses will be held at Illinois Central College.

Initially upon entry as a freshman the student will take more general education courses than nursing courses; however, he/she will also take nursing courses. As the student progresses to the junior level of study, he/she will be taking more nursing courses than general education courses. Upon completion of the required 122 credits, the Bachelor of Science in nursing degree will be awarded and the graduate will then be qualified to sit for the state licensing exam known as the NCLEX. Upon passing this exam, the graduate will be licensed as a Registered Nurse or "RN".

Students may enter this program directly from high school or as transfer students. Students with college credits will have those credits evaluated as to their transferability into the MCON BSN program. The student will then be placed in the program accordingly. While this BSN program, as with other four year college and university undergraduate degrees, requires four years to complete, it can be completed in three years if the student attends summer semesters. This program is also designed, so it may be attended on a part-time basis.

Students entering or transferring into this track will be able to attend full time or part time:

If attending Full time - the degree can be completed in eight consecutive semesters, including summers. If attending part time - the student may take up to seven years to complete the degree.

**Course Descriptions for Pre-licensure
Baccalaureate Degree in Nursing track
learners**

Requirements for Degrees

GENERAL STUDIES COURSES

ART 110 Introduction to Art

3 credit hours *Pre-requisite:* Admission to Methodist College of Nursing

This course explores the nature, value, language and history of art. The content and grading system is structured for the learner who has had little or no previous art experience. Lectures are reinforced by written assignments, gallery visits, critiques and introductory art experiences. This course is acceptable for humanities credit. Two classroom and two laboratory hours per week.

BIOL 145 Principles of Human Anatomy and Physiology I

4 credit hours *Pre-requisite:* A score of 19 on the English ACT or administrative approval and must pass the departmental placement test.

This course studies structural relationships of the body at the molecular, cellular, tissue, organ, and system levels with an emphasis on the integration of human function. Three classroom and two laboratory hours per week. The laboratory portion of the course is held at ICC North Campus.

BIOL 146 Principles of Human Anatomy and Physiology II

4 credit hours *Pre-requisite:* BIOL 145 with a grade of C or better

This course is a continuation of BIOL 145 that studies the structural and functional relationships and interdependence of body systems. Three classroom and two laboratory hours per week. The laboratory portion of the course is held at ICC North Campus.

BIOL 210 Microbiology

4 credit hours *Pre-requisite:* One semester college laboratory course in some field of Biological Science.

This course involves the study of the cultivation, morphology, physiology, pathology, reproduction, genetics, and control of bacteria. Activities of yeasts, protozoa, algae, and molds,

along with investigation of their economic importance, are honored. Three classroom and two laboratory hours per week. The laboratory portion of the course is held at ICC North Campus.

BIOL 300 Human Genetics

3 credit hours *Pre-requisite:* BIOL 145 or BIOL 210

This course is designed to guide the learner in developing a knowledge base in genetics, especially as it relates to humans, and the recent advancements due to genomics. The student will learn critical thinking with case studies, and practice real genetic problems of diseases which have a clinical reality.

COMM 110 Communication: Process and Practice

3 credit hours *Pre-requisite:* Admission to Methodist College of Nursing

This course provides the foundations for theoretical understanding about interpersonal communication, intercultural communication, group communication, nonverbal communication, verbal communication, intrapersonal communication, and rhetorical strategies. The course also provides practical application in public speaking and group membership. Three classroom hours per week.

ENGL 110 Composition I

3 credit hours *Pre-requisite:* A minimum score of 19 on the English ACT or administrative approval.

This course progresses the learner from writing expressive compositions (expressing the ideas of the writer) to writing referential compositions (explaining or analyzing the subject matter for the reader) to writing persuasive compositions (persuading an audience), through critical reading, discussion, exercises, conferences, and revision. The majority of the writing is referential. Three classroom hours per week.

ENGL 111 Composition II

3 credit hours *Pre-requisite:* ENGL 110 with a grade of C or better.

This course progresses the learner from writing analysis of and inquiring about issues to writing argumentative and persuasive compositions using research, through critical reading,

discussion, exercises, conferences, and revision. The majority of the writing is argumentative. Three classroom hours per week.

Film 110 Survey of Film
3 credit hours *Pre-requisite: None*

This course examines film as twentieth century art form. It develops an understanding of the language of film and a familiarity with important film genres, filmmakers, and film trends in American and worldwide films. Three lecture hours per week.

LIT 111 The Short Story and the Novel
3 credit hours *Pre-requisite: Admission to Methodist College of Nursing.*

This course of extensive reading in prose fiction is designed to enhance the student's ability to read the short story and the novel analytically with keener understanding and heightened appreciation of content and form. Three classroom hours per week.

LIT 213 English Literature
3 credit hours *Pre-requisite: ENGL 110*

This course is a survey of representative works illustrating the development of British literature from 1800 to the present, with an emphasis on understanding major literary movements in relation to their intellectual, social, and political contexts. Three classroom hours per week.

MATH 110 Concepts of Mathematics
3 credit hours *Pre-requisite: A minimum ACT math score of 19 or administrative approval.*

This course introduces the nature of mathematics through a study of elementary logic, set theory, statistics, geometry, and the mathematics of finance. The course will focus on mathematical reasoning and real-life problem solving. This is not intended to be a survey course or a math appreciation course. Three classroom hours per week.

MATH 111 General Education Statistics
3 credit hours *Pre-requisite: A minimum ACT math score of 19 or administrative approval or MATH 110.*

This course includes a study of frequency distribution, graphs (histograms, pie charts, etc.), measures of location (mean, median,

mode, percentiles) measures of dispersion (variance, standard deviation), probability, estimating, and predicting, normal distribution, binomial distribution, and correlation. This course will emphasize the quantitative portion of descriptive statistics – gathering, analyzing, presenting and interpreting data. Three classroom hours per week including computer laboratory activities.

PHIL 111 Logic
3 credit hours *Pre-requisite: Admission to Methodist College of Nursing*

This course introduces and examines the various types of philosophies and philosophical concepts. Emphasis will be given to traditional philosophical attitudes and activities and their relationships to problems in contemporary culture. Three classroom hours per week.

POLSC 115 American National Government
3 credit hours *Pre-requisite: Admission to Methodist College of Nursing*

This course represents contemporary American political behavior, government and power relationships at the national level.

PSY 110 Introduction to Psychology
3 credit hours *Pre-requisite: Minimum ACT reading score of 20 or administrative approval.*

Psychology is the scientific study of behavior and mental processes. The learner will be introduced to fundamentals of psychological psychology, sensation and perception, learning, emotions and motivation, and psychological disorders and their treatment. The role of research and the scientific method are emphasized throughout the course. Three classroom hours per week.

PSY 112 Personality (Behavioral Science Elective)
3 credit hours *Pre-requisite: PSY 110*

This course is a comparison of the major theoretical approaches to explaining personality, including its development and relation to adaptive and maladaptive human behavior. The discussion of empirical research and treatment methods will be included. Three classroom hours per week.

PSY 202 Child and Adolescent Psychology (Behavioral Science Elective)

3 credit hours *Pre-requisite:* PSY 110

This course is a review of research in developmental psychology regarding the physical, perceptual, cognitive, and social development of children and adolescents. Three classroom hours per week.

PSY 220 Adulthood and Aging (Behavioral Science Elective)

3 credit hours *Pre-requisite:* PSY 110

This course is an examination of the psychological, social and biological influences that affect the human life course from young adulthood to old age. The topics covered may include memory and intellectual functioning, personality and social relationships, physical and emotional health, and life transitions. Three classroom hours per week.

PSY 345 Health Psychology

3 credit hours *Pre-requisite:* PSY 110 and one 3 credit hour behavioral science elective

This course explores the biological, psychological and social interactions that influence an individual's state of health and illness. Stress, pain, cardiovascular risk, cancer, chronic illness, and addictive behaviors are examined for associated impact on health.

PSY 400 Abnormal Psychology

3 credit hours *Pre-requisite:* PSY 110 and 3 additional credit hours of a behavioral science elective.

A study of the dynamics, etiology, prevention and overview of treatment of abnormal behavior, including the anxiety and psychosomatic disorders, depressive disorders, social and interpersonal disorders, psychoses, substance abuse disorders, and other abnormal personality patterns. Three classroom hours per week.

SOC 110 An Introduction to Sociology

3 credit hours *Pre-requisite:* Minimum ACT reading score of 20 or administrative approval.

This course utilizes the approaches of functionalism, conflict theory, and interactionism to analyze the structures and processes of group life from a scientific perspective. Major areas of inquiry include: theory and methodology, culture, social organizations,

socialization, groups, institutions, formal organizations, collective behavior, and social change. Three classroom hours per week.

SOC 213 Introduction to Cultural Anthropology (Behavioral Science Elective)

3 credit hours *Pre-requisite:* Admission to Methodist College of Nursing

This course will be an investigation of the origin and history of human culture, its evolution and development. The structure and functions of human cultures will be studied with special emphasis given to family structures, economics, social structure, personality development and religion. Three classroom hours per week.

SOC 218 Introduction to Social Psychology (Behavioral Science Elective)

3 credit hours *Pre-requisite:* SOC 110 or PSY 110

This course employs the social psychological perspective to examine the behavior of the individual in society. Major emphasis is given to psychological and sociological theory and to the scientific methods employed by the social psychologist as scientist. Focal points include: the self-concept, perception, communication, attraction, and socialization. Three classroom hours per week.

SOC 219 The Sociology of Race and Ethnicity in America (Behavioral Science Elective)

3 credit hours *Pre-requisite:* SOC 110

This course uses the sociological approach to explore the relationships among the various racial and ethnic groups which constitute American society, including the structure of power distribution and inequality, process of adaptation, related movements for social change, and current issues of pluralism. Three classroom hours per week.

SOC 221 Death and Dying (Behavioral Science Elective)

3 credit hours *Pre-requisite:* Admission to Methodist College of Nursing

This course is concerned with a consideration of death and the dying process. Learners have the opportunity to read and discuss issues relevant to the major topic. Three classroom hours per week.

HEALTH SCIENCES COURSES

HS 100 Medical Terminology for the Health Sciences

1 credit hour Prerequisite: Admission to Methodist College of Nursing.
(For students entering MCON in Fall 2011, this will no longer be a required course in the curriculum)

This course introduces the learner to terminology in relationship to body systems, medical conditions, diagnoses and disease processes, and medical procedures.

HS 200 Informatics in Healthcare

3 credit hours Prerequisites: N100, N120.

This course will provide the learner with the opportunity to become proficient in computer, information and communication literacy. The focus of this course is two-fold: assisting the learner to be competent in using technology in everyday life, learning and clinical care, and exploring fundamentals of informatics in healthcare, including the role of technology in healthcare, clinical information systems and issues related to patient safety and confidentiality. Various channels of electronic and digital communication will also be explored. Basic computer and software knowledge and skills will be covered and practiced.

HS 210 Mathematics for Medications

1 credit hour Prerequisite: MATH 110.
(For students entering MCON in Fall 2011, this will no longer be a required course in the BSN curriculum)

This course introduces the learner to specific mathematic skills and calculations used in nursing practice. The learner will receive a short mathematics refresher and be introduced to the details of drug calculations of multiple types common to various types of settings

NURSING COURSES

N100 Nursing Seminar: Introduction to Nursing

2 credit hours Pre-requisites: Admission to Methodist College of Nursing.

This non-clinical course introduces the learner to the collegiate environment of baccalaureate nursing education, the nursing profession, and contemporary nursing practice. The learner is

Provided the opportunity to identify his or her own learning styles(s), explore academic success strategies and resources, and practice applying elemental structures and standards to topics to facilitate development of the traits of a critical thinker. The development of the nursing profession is explored from a historical perspective within a social context. The learner examines the contemporary health care delivery system and the role of nursing within the system. The role dimensions of the professional nurse are introduced and examined. The concepts of client and client variables are examined within the context of the nursing framework in conjunction with the nursing process.

N120 Concepts of Health and Healthcare

2 credit hours Pre-requisites: Admission to Methodist College of Nursing.

This non-clinical course introduces the learner to a concept of health as it applies to individuals, families and communities. Determinants of health are introduced and discussed as well as the influence of culture and ethnicity. Basic tenets relating to nutrition, exercise, and lifestyle choices in relation to optimal health are examined. Selected nursing theories are introduced and used to evaluate the concepts of health. The basic structure and function of the United States' health care delivery system is discussed as well as the role of nursing within the system. Examples of the six levels of health care services in the United States are examined. Current issues in health care delivery and the future of health care are explored. In addition, the learner is introduced to the concept of health literacy and the nurse's role as educator in the promotion of health.

N200 Health Assessment in Nursing Practice

3 credit hours Pre- or Co-requisites: N100, N120, BIOL 145, BIOL 146.

This course is designed to provide the learner the theoretical knowledge and clinical competency needed for evaluating a client's state of health in relation to developmental levels across the lifespan. The learning experience focuses upon holistic assessment of the client system, with a focus on primary, secondary, and tertiary prevention. Normal lines of defense and intrapersonal, interpersonal, and extrapersonal stressors on the client system will be identified. Gordon's

Functional Health Patterns are introduced as a means of organizing assessment data within Neuman's five dimensions of being. Emphasis is placed on data collection, interpretation, and documentation of findings and evaluation of lab values and diagnostic testing. The learner is provided with multiple opportunities in both the laboratory and clinical settings to develop the assessment skills.

N210 Standards of Nursing Practice

3 credit hours Pre- or Co-requisite: N100.
(To be replaced in Spring 2012 with N211)

This non-clinical course will provide the learner with the opportunity to investigate ethical and legal issues that influence the standards of nursing practice. Ethical issues, that will be discussed, are frequently encountered by nursing personnel, but also involve the entire multidisciplinary team. Historical perspectives as well as the learner role, both personally and professionally, will be examined. Legal standards and professional issues are reviewed, as well as the use of the Ethical Decision Making process. Ethical issues and legal aspects will be addressed across the life span, including infant, child, adolescent, adult and the elder population.

N211 Standards of Nursing Practice

2 credit hours: Pre-or Co-requisite: N100
(Replaces N210 in Spring 2012)

This non-clinical course will provide the learner with the opportunity to investigate ethical and legal issues that influence the standards of nursing practice. Ethical issues, that will be discussed, are frequently encountered by nursing personnel, but also involve the entire multidisciplinary team. Historical perspectives as well as the learner role, both personally and professionally, will be examined. Legal standards and professional issues are reviewed, as well as the use of the Ethical Decision Making process. Ethical issues and legal aspects will be addressed across the life span, including infant, child, adolescent, adult and the elder population.

Nursing 230 Dimensions of Holistic Nursing 4 credit hours (2 credit hours classroom and 2 credit hours laboratory/clinical experience).

Co-requisites or Pre-requisites: N100, N120, N200, N210, BIOL 145, 146, BIOL 210.

(To be replaced in Spring 2012 with N231)

This clinical nursing course introduces the learner to nursing as a caring profession predicated on the ethic of care in which caring is viewed as a moral imperative. The course approaches holism from a systems perspective and applies the concept of holism to both the client system and the nursing role, emphasizing the multidimensional role of the nurse within the concept of care. The nursing role dimensions of provider of care, communicator, educator, advocate and manager are explored within the context of the physical, psychological, sociocultural, developmental, and spiritual dimensions and needs of the client system. The learner is introduced to the nursing process as a means of providing holistic nursing care that synthesizes the multidimensional needs of the client system with caring interventions that assist the client system in attaining, maintaining, or restoring health. The course emphasizes and explores the unique needs of the older adult and associated nursing care. Laboratory and clinical experiences allow the learner to examine the scope of professional nursing practice. The learner is expected and provided opportunity to achieve competency in basic psychomotor nursing skills.

N231 Dimensions of Holistic Nursing Care 5 credit hours (3 credit hours classroom and 2 credit hours laboratory/clinical experience).

Co-requisites or Pre-requisites: N100, N120, N200, N210, BIOL 145, 146, BIOL 210. **(Replaces N230 in Spring 2012.)**

This clinical nursing course introduces the learner to nursing as a caring profession predicated on the ethic of care in which caring is viewed as a moral imperative. The course approaches holism from a systems perspective and applies the concept of holism to both the client system and the nursing role, emphasizing the multidimensional role of the nurse within the concept of care. The nursing role dimensions of provider of care, communicator, educator, advocate and manager are explored within the context of the physical, psychological, sociocultural, developmental, and spiritual dimensions and needs of the client system. The

learner is introduced to the nursing process as a means of providing holistic nursing care that synthesizes the multidimensional needs of the client system with caring interventions that assist the client system in attaining, maintaining, or restoring health. The course emphasizes and explores the unique needs of the older adult and associated nursing care. This course also reviews medical terminology and introduces the student to mathematical calculations common to and required for medication administration. Laboratory and clinical experiences allow the learner to examine the scope of professional nursing practice. The learner is expected and provided opportunity to achieve competency in basic psychomotor nursing skills.

N304 Transcultural Nursing

3 credit hours Pre- or Co-requisites: Completion of all coursework in the lower division of the Four-Year Pre-licensure BSN program track.

This non-clinical course will increase the learner's understanding of cultural influences upon the learners and clients (individuals, families, groups, and community) perceptions, values, and beliefs concerning health, illness, and healing. Meanings associated with cultural phenomenon, traditions, practices, and rituals will be explored to provide a context to clients' responses to health, health challenges, and nursing care. In addition, the learner will develop an increasing awareness of the critical role a person's culture plays in maintain, retaining, or attaining wellness.

N313 Pathopharmacology in Nursing Practice

3 credit hours Pre- or Co-requisites: Completion of all coursework in the lower division of the Four-Year Pre-licensure BSN program track.

This course builds upon selected areas of general education knowledge as well as basic knowledge of nursing, health and illness and nursing care. It is an integrated course which introduces the mechanisms and theories related to physiologic regulatory processes, the development of commonly occurring health deviations, and the pharmacodynamic effects of therapeutic medication on the human body. The nursing process provides the learner with the theoretical basis for making pharmacotherapeutic inferences relative to

pathophysiologic data. The collaborative role of the nurse in the context of the multidisciplinary team and use of the nursing process are emphasized in developing a comprehensive approach to the clinical applications of medication therapy. An emphasis is placed on the therapeutic use of medications, focusing on attaining and maintaining the client systems normal line of defense and lines of resistance. The legal and ethical aspects of safe medication administration and client education are also examined.

N319 Nursing Research I: Overview and Qualitative Studies.

1 credit hour Co- or Pre-requisites: PHIL 111, MATH 111. Pre-requisite N230.

This is the first of two courses in inquiry, evidence, and nursing scholarship. This series will cultivate the learners' adoption of a nursing philosophy aimed to use critical thinking and develop an evidence-based nursing practice. This course focuses on beginning level competencies that students need to effectively use and communicate the process of scientific inquiry as the basis for professional nursing practice. Well-defined processes to critically appraise filtered evidence for clients who experience common conditions or similar responses to health-related stressors will be explored. Identification and application of the highest level of evidence, while considering clinician's expertise and patient preferences, and judicious integration of interventions that are substantiated by the best and most current clinical practice guidelines in the nursing care of similar clients will be emphasized.

N321 Family as Client System

2 credit hours Pre- or Co-requisites: Completion of all coursework in the lower division of the Four-Year Pre-licensure BSN program track or administrative approval.

This course will provide an in-depth study of concepts, theories, research, issues, trends, and public policy relevant to families. Emphasis will be placed on developing a theoretical basis for intervention with families in need of healthcare.

N342 Mental Health Nursing Practice
5 credit hours: 3 credits of classroom instruction and 2 credits (6 clock hours per week of clinical instruction). Pre-or Co-requisite: N361.

This course is designed to facilitate development of theoretical knowledge and skills needed to support various client systems in attaining and maintaining optimal mental health. Emphasis is placed on assessing diverse client populations, utilizing therapeutic communication, and selecting culturally appropriate nursing interventions to support adaptation within client systems. The learner relates with clients in a variety of mental health milieus, using the nursing process as a guide to assess, diagnose, plan, implement, and evaluate interventions in acute inpatient and community settings.

N345 Nursing Research II: Quantitative Studies

2 credit hours Pre-requisites: N319 and completion of all lower division courses.

This course is the second of two courses in research in nursing practice. It focuses on the beginning level competencies the student needs in order to use the process of scientific inquiry as the basis for professional nursing practice. Opportunities are provided for the student to apply the research process to critically read and analyze nursing research studies. A general understanding of and appreciation for research is provided. In the second course the students will explore the quantitative approach to research and its application to nursing.

N361 Health Alterations in Nursing Practice
6 credit hours: 4 credits of classroom instruction and 2 credits (6 clock hours per week of clinical instruction). Pre-requisites:

Completion of all coursework in the lower division of the Four-Year Pre-licensure BSN program track.

This course focuses on the care of adult clients who are experiencing alterations in patterns of health. Learners will utilize the nursing process to plan therapeutic nursing interventions to optimize the individual client's health. Content in this course is introduced from a functional status and biopsychosocial approach. Major concepts include the nursing care of clients with alteration in these functional patterns of health: nutrition-metabolic pattern, elimination patterns, activity-

exercise patterns, and cognitive-perceptual patterns.

Clinical and laboratory experiences allow the learner to apply nursing interventions and skills learned throughout the course. The learner is expected and provided an opportunity to achieve competency in nursing skills related to care of these clients.

N370 The Childbearing and Childrearing Family in Nursing Practice

6 credit hours: 4 credits of classroom instruction and 2 credits (6 clock hours per week of clinical instruction). Co- or Pre-requisite: N361, N321.

This clinical course provides the learner the theoretical knowledge to apply the nursing process to culturally diverse family client systems during childbearing and childrearing phases of family development. The pregnancy experience from conception through recovery will be explored. Selected health issues for men, women and children with an emphasis on primary prevention will also be examined. Emphasis is placed on secondary and tertiary prevention in assisting the client system to attain or maintain wellness from stressors common to children from birth to adolescence. Clinical experiences are offered in both acute care and community settings to provide for correlation of theory to practice.

N421 Population Health Nursing

5 credit hours: 3 credits of classroom instruction and 2 credits (6 clock hours per week of clinical instruction). Co- or Pre-requisites: N361, N321.

This clinical course is designed to provide an introduction to population-focused nursing and to cultivate an awareness of the multifaceted role of the community-based health nurse in the promotion of optimum wellness in the health care system. The learner integrates the concepts of prevention, adaptation, environment, continuity of care, multidisciplinary collaboration, evidence-based practice and cultural diversity to provide holistic care to individuals, families and groups experiencing potential or actual stressors. Sources for local and global information and resources for primary, secondary and tertiary prevention will be explored. Classroom assignments and structured clinical assignments and experiences

will facilitate the learners' application of theoretical concepts and functioning to practice as a nurse generalist in the local community with an understanding of the healthcare issues of populations at the local, state, national and international community levels.

N431 Health Policy and Professional Leadership

3 credit hours Pre-requisite: Completion of all coursework in the lower division of the Four-Year Pre-licensure BSN program track.

This non-clinical course is designed to ensure that the baccalaureate-educated nurse has a solid understanding of the broader context of health care, including how patient care services are organized and financed, and how reimbursement is structured. The learner will develop an understanding of the identification of healthcare issues, how healthcare policy is both developed and changed, and how that process can be influenced through the efforts of nurses, other healthcare professionals, the laity and special advocacy groups. Emphasis is placed on the professional nurse's role as Member of the Profession.

N432 Complex Health Alterations in Nursing Practice

6 credit hours: 4 credits of classroom instruction and 2 credits (6 clock hours per week of clinical instruction).

Pre-or-co-requisite: N361, N321.

This clinical course uses the Neuman Systems Model as a means to explore and learn about complex stressors affecting the adult client system. While the course involves a holistic approach to client care, specific physiological stressors that are examined include acute and chronic renal failure; alterations in cardiac, peripheral vascular, respiratory, and neurological function; and multiple organ dysfunction syndrome. Learners integrate prior learning from select areas of general education and nursing coursework to develop the requisite body of knowledge and skills required as professional nurses. A concurrent clinical component enables learners to apply theory to practice.

N445 Internship and Management in Nursing Practice

7 credit hours: 4 credits of classroom instruction and 3 credits (9 clock hours per week of clinical instruction or 18 clock hours clinical per week for 8 weeks).

Prerequisites: N361, N342, N345, N370, N425. Co- or Pre-requisite: N432.

This clinical course provides the pre-professional nursing learners with the opportunity to explore the scope of professional nursing practice through an intensive clinical immersion and mentorship program in the final semester of the program. The outcomes of the course are intended to facilitate and prepare the baccalaureate-prepared generalist nurse to practice within complex healthcare systems and assume the roles of provider of care; designer/manager/coordinator of care; and member of the profession. The learner provides care for client systems in an acute care environment in collaboration with nurse mentors/preceptors. The skills associated with leadership, collaboration, interdisciplinary teams, nursing care delivery management and evaluation, and quality improvement models are emphasized. Learners are also required to complete a scholarly project that is based on an identified clinical problem. The project is designed to be an exemplar of evidence-based practice (Care that integrates the best research with clinical expertise and patient values for optimum care).

N450 Issues, Trends and Nursing Theory

3 credit hours Prerequisites: N361, N342, N370, N345, N425. Co- or Pre-requisite: N432.

This non-clinical course is offered at the senior level of the undergraduate curriculum. The content is aimed at examining the past, current and future impact of selected themes related to health care in general, and nursing practice in particular at the local, national, and international levels. The course emphasizes the longitudinal nature of many contemporary issues and trends that have a direct impact on the development of nursing science, practice and education.

Second Degree Accelerated BSN Track

General Information

At Methodist College of Nursing (MCON), we're proud to announce the opening of our latest program - the Second Degree Accelerated BSN, an evening/week-end program for working adults. This program is designed for those who have earned a bachelor's degree in a field other than nursing and wish to become a Registered Nurse. Upon completion of this degree, graduates are eligible to take the NCLEX-RN exam to be licensed as Registered Nurses.

The only one of its type in the greater Peoria area, this program requires five consecutive semesters, including summer sessions. The required courses and clinical experiences are only scheduled on evenings and weekends, blending online and classroom learning for coursework, which allows busy working adult students flexibility in their schedule. It is also the only program of its kind that includes an onsite, hands-on internship, providing the student real world, real life learning.

Up to 30 students will be admitted each Fall and Spring semester.

Requirements for Degrees

Course Descriptions for Second Degree Accelerated BSN track students

BIOL 300 Human Genetics

3 credit hours *Pre-requisite:* BIOL 145 or BIOL 210

This course is designed to guide the learner in developing a knowledge base in genetics, especially as it relates to humans, and the recent advancements due to genomics. The student will learn critical thinking with case studies, and practice real genetic problems of diseases which have a clinical reality.

PSY 345 Health Psychology

3 credit hours *Pre-requisite:* PSY 110 and one 3 credit hour behavioral science elective

This course explores the biological, psychological and social interactions that influence an individual's state of health and illness. Stress, pain, cardiovascular risk, cancer, chronic illness, and addictive behaviors are examined for associated impact on health.

PSY 400 Abnormal Psychology

3 credit hours *Pre-requisite:* PSY 110

A study of the dynamics, etiology, prevention and overview of treatment of abnormal behavior, including the anxiety and psychosomatic disorders, depressive disorders, social and interpersonal disorders, psychoses, substance

abuse disorders, and other abnormal personality patterns. Three classroom hours per week.

HS 100 Medical Terminology for the Health Sciences

1 credit hour *Prerequisite:* Admission to Methodist College of Nursing.

(Students entering MCON in the Second Degree BSN program track in Fall 2011, will no longer be required to take HS 100).

This course introduces the learner to terminology in relationship to body systems, medical conditions, diagnoses and disease processes, and medical procedures.

HS 200 Informatics in Healthcare

3 credit hours *Pre- or Co-requisites:* N100, N120.

This course will provide the learner with the opportunity to become proficient in computer, information and communication literacy. The focus of this course is two-fold: assisting the learner to be competent in using technology in everyday life, learning and clinical care, and exploring fundamentals of informatics in healthcare, including the role of technology in healthcare, clinical information systems and issues related to patient safety and confidentiality. Various channels of electronic and digital communication will also be explored. Basic computer and software knowledge and skills will be covered and practiced.

HS 210 Mathematics for Medications

1 credit hour Prerequisite: Admission to Methodist College of Nursing.
(Students entering MCON in the Second Degree BSN program track in Fall 2011 will no longer be required to take HS 210).

This course introduces the learner to specific mathematic skills and calculations used in nursing practice. The learner will receive a short mathematics refresher and be introduced to the details of drug calculations of multiple types common to various types of settings.

INDEPENDENT STUDY COURSES

IDS 399 Independent Study Course:
Two credit hours of IDS 399 are required for degree completion in the Second Degree Accelerated BSN track.

1 credit hour minimum - 6 credit hours maximum. Pre-requisite: Completion of all lower division courses. **(This course becomes a required course beginning with the students entering MCON in Fall 2011).**

This non-clinical course is designed collaboratively between the student and a faculty member. The purpose of the course is to allow the student to select an area of nursing practice, subject, or population of interest to develop additional knowledge or skills relative to nursing practice. The number of credit hours assigned to the course is predetermined and depends upon the course objectives, desired course outcomes, and required assignments. This course as a degree requirement may be substituted with a N390 elective.

NURSING COURSES

N100 Nursing Seminar: Introduction to Nursing

2 credit hours Pre-requisites: Admission to Methodist College of Nursing.

This non-clinical course introduces the learner to the collegiate environment of baccalaureate nursing education, the nursing profession, and contemporary nursing practice. The learner is provided the opportunity to identify his or her own learning styles(s), explore academic success strategies and resources, and practice applying elemental structures and standards to topics to facilitate development of the traits of a critical thinker. The development of the nursing

profession is explored from a historical perspective within a social context. The learner examines the contemporary health care delivery system and the role of nursing within the system. The role dimensions of the professional nurse are introduced and examined. The concepts of client and client variables are examined within the context of the nursing framework in conjunction with the nursing process.

N120 Concepts of Health and Healthcare

2 credit hours Pre-or Co-requisites: N100

This non-clinical course introduces the learner to a concept of health as it applies to individuals, families and communities. Determinants of health are introduced and discussed as well as the influence of culture and ethnicity. Basic tenets relating to nutrition, exercise, and lifestyle choices in relation to optimal health are examined. Selected nursing theories are introduced and used to evaluate the concepts of health. The basic structure and function of the United States' health care delivery system is discussed as well as the role of nursing within the system. Examples of the six levels of health care services in the United States are examined. Current issues in health care delivery and the future of health care are explored. In addition, the learner is introduced to the concept of health literacy and the nurse's role as educator in the promotion of health.

N200 Health Assessment Across the Lifespan

3 credit hours Pre- or Co-requisites: N100, N120, BIOL 145, BIOL 146.

This course is designed to provide the learner the theoretical knowledge and clinical competency needed for evaluating a client's state of health in relation to developmental levels across the lifespan. The learning experience focuses upon holistic assessment of the client system, with a focus on primary, secondary, and tertiary prevention. Normal lines of defense and intrapersonal, interpersonal, and extrapersonal stressors on the client system will be identified. Gordon's Functional Health Patterns are introduced as a means of organizing assessment data within Neuman's five dimensions of being. Emphasis is placed on data collection, interpretation, and documentation of findings and evaluation of lab values and diagnostic testing. The learner is

provided with multiple opportunities in both the laboratory and clinical settings to develop the assessment skills.

N210 Standards of Nursing Practice

3 credit hours Pre- or Co-requisite: N100.
(This course will be replaced in the Second degree

This non-clinical course will provide the learner with the opportunity to investigate ethical and legal issues that influence the standards of nursing practice. Ethical issues, that will be discussed, are frequently encountered by nursing personnel, but also involve the entire multidisciplinary team. Historical perspectives as well as the student role, both personally and professionally, will be examined. Legal standards and professional issues are reviewed, as well as the use of the Ethical Decision Making process. Ethical issues and legal aspects will be addressed across the life span, including infant, child, adolescent, adult and the elder population.

N211: Standards of Nursing Practice

2 credit hours: Pre-or Co-requisite: N100
(Replaces N210 in Spring 2012)

This non-clinical course will provide the learner with the opportunity to investigate ethical and legal issues that influence the standards of nursing practice. Ethical issues, that will be discussed, are frequently encountered by nursing personnel, but also involve the entire multidisciplinary team. Historical perspectives as well as the learner role, both personally and professionally, will be examined. Legal standards and professional issues are reviewed, as well as the use of the Ethical Decision Making process. Ethical issues and legal aspects will be addressed across the life span, including infant, child, adolescent, adult and the elder population.

Nursing 230 Dimensions of Holistic Nursing
4 credit hours (2 credit hours classroom and 2 credit hours laboratory/clinical experience).

Pre-requisites or Co-requisites: N100, N120, N200, N210, BIOL 145, 146, BIOL 210.

This clinical nursing course introduces the learner to nursing as a caring profession predicated on the ethic of care in which caring is viewed as a moral imperative. The course approaches holism from a systems perspective

and applies the concept of holism to both the client system and the nursing role, emphasizing the multidimensional role of the nurse within the concept of care. The nursing role dimensions of provider of care, communicator, educator, advocate and manager are explored within the context of the physical, psychological, sociocultural, developmental, and spiritual dimensions and needs of the client system. The learner is introduced to the nursing process as a means of providing holistic nursing care that synthesizes the multidimensional needs of the client system with caring interventions that assist the client system in attaining, maintaining, or restoring health. The course emphasizes and explores the unique needs of the older adult and associated nursing care. Laboratory and clinical experiences allow the learner to examine the scope of professional nursing practice. The learner is expected and provided opportunity to achieve competency in basic psychomotor nursing skills.

N231: Dimensions of Holistic Nursing Care
5 credit hours (2 credit hours classroom and 2 credit hours laboratory/clinical experience).

Co-requisites or Pre-requisites: N100, N120, N200, N210, BIOL 145, 146, BIOL 210. **(Replaces N230 in Spring 2012.)**

This clinical nursing course introduces the learner to nursing as a caring profession predicated on the ethic of care in which caring is viewed as a moral imperative. The course approaches holism from a systems perspective and applies the concept of holism to both the client system and the nursing role, emphasizing the multidimensional role of the nurse within the concept of care. The nursing role dimensions of provider of care, communicator, educator, advocate and manager are explored within the context of the physical, psychological, sociocultural, developmental, and spiritual dimensions and needs of the client system. The learner is introduced to the nursing process as a means of providing holistic nursing care that synthesizes the multidimensional needs of the client system with caring interventions that assist the client system in attaining, maintaining, or restoring health. The course emphasizes and explores the unique needs of the older adult and associated nursing care. This course also reviews medical terminology and introduces the student to mathematical calculations common to and required for medication administration.

Laboratory and clinical experiences allow the learner to examine the scope of professional nursing practice. The learner is expected and provided opportunity to achieve competency in basic psychomotor nursing skills.

N304 Transcultural Nursing

3 credit hours Pre- or Co-requisites: Completion of all coursework in the first semester of the Second Degree Accelerated BSN program track.

This non-clinical course will increase the learner's understanding of cultural influences upon the students and clients (individuals, families, groups, and community) perceptions, values, and beliefs concerning health, illness, and healing. Meanings associated with cultural phenomenon, traditions, practices, and rituals will be explored to provide a context to clients' responses to health, health challenges, and nursing care. In addition, the learner will develop an increasing awareness of the critical role a person's culture plays in maintaining, retaining, or attaining wellness.

N313 Pathopharmacology in Nursing Practice

3 credit hours Pre- or Co-requisites: Completion of all coursework in the first semester of the Second Degree Accelerated BSN program track.

This course builds upon selected areas of general education knowledge as well as basic knowledge of nursing, health and illness and nursing care. It is an integrated course which introduces the mechanisms and theories related to physiologic regulatory processes, the development of commonly occurring health deviations, and the pharmacodynamic effects of therapeutic medication on the human body. The nursing process provides the learner with the theoretical basis for making pharmacotherapeutic inferences relative to pathophysiologic data. The collaborative role of the nurse in the context of the multidisciplinary team and use of the nursing process are emphasized in developing a comprehensive approach to the clinical applications of medication therapy. An emphasis is placed on the therapeutic use of medications, focusing on attaining and maintaining the client systems normal line of defense and lines of resistance. The legal and ethical aspects of safe medication

administration and client education are also examined.

N319 Nursing Research I: Overview and Qualitative Studies.

1 credit hour Co- or Pre-requisites: PHIL 111, MATH 111. Pre-requisite N230.

This is the first of two courses in inquiry, evidence, and nursing scholarship. This series will cultivate the learners' adoption of a nursing philosophy aimed to use critical thinking and develop an evidence-based nursing practice. This course focuses on beginning level competencies that students need to effectively use and communicate the process of scientific inquiry as the basis for professional nursing practice. Well-defined processes to critically appraise filtered evidence for clients who experience common conditions or similar responses to health-related stressors will be explored. Identification and application of the highest level of evidence, while considering clinician's expertise and patient preferences, and judicious integration of interventions that are substantiated by the best and most current clinical practice guidelines in the nursing care of similar clients will be emphasized.

N321 Family as Client System

2 credit hours Pre- or Co-requisites: Completion of all coursework in the first semester of the Second Degree Accelerated BSN program track.

This course will provide an in-depth study of concepts, theories, research, issues, trends, and public policy relevant to families. Emphasis will be placed on developing a theoretical basis for intervention with families in need of healthcare.

N342 Mental Health Nursing Practice
5 credit hours: 3 credits of classroom instruction and 2 credits (6 clock hours per week of clinical instruction). Pre-or Co-requisite: N361.

This course is designed to facilitate development of theoretical knowledge and skills needed to support various client systems in attaining and maintaining optimal mental health. Emphasis is placed on assessing diverse client populations, utilizing therapeutic communication, and selecting culturally appropriate nursing interventions to support adaptation within client systems. The learner relates with clients in a variety of mental health milieus, using the

nursing process as a guide to assess, diagnose, plan, implement, and evaluate interventions in acute inpatient and community settings.

N345 Nursing Research II: Quantitative Studies

2 credit hours Pre-or-Co-requisites: N230, N245

This course is the second of two courses in research in nursing practice. It focuses on the beginning level competencies the student needs in order to use the process of scientific inquiry as the basis for professional nursing practice. Opportunities are provided for the student to apply the research process to critically read and analyze nursing research studies. A general understanding of and appreciation for research is provided. In the second course the students will explore the quantitative approach to research and its application to nursing.

N361 Health Alterations in Nursing Practice **6 credit hours: 4 credits of classroom instruction and 2 credits (6 clock hours per week of clinical instruction).**

Pre-requisites: Completion of all first semester courses of the Second Degree Pre-licensure BSN track.

This course focuses on the care of adult clients who are experiencing alterations in patterns of health. Learners will utilize the nursing process to plan therapeutic nursing interventions to optimize the individual client's health. Content in this course is introduced from a functional status and biopsychosocial approach. Major concepts include the nursing care of clients with alteration in these functional patterns of health: nutrition-metabolic pattern, elimination patterns, activity-exercise patterns, and cognitive-perceptual patterns.

Clinical and laboratory experiences allow the learner to apply nursing interventions and skills learned throughout the course. The learner is expected and provided an opportunity to achieve competency in nursing skills related to care of these clients.

N370 The Childbearing and Childrearing Family in Nursing Practice

6 credit hours: 4 credits of classroom instruction and 2 credits (6 clock hours per week of clinical instruction). Co- or Pre-requisite: N361, N321.

This clinical course provides the learner the theoretical knowledge to apply the nursing process to culturally diverse family client systems during childbearing and childrearing phases of family development. The pregnancy experience from conception through recovery will be explored. Selected health issues for men, women and children with an emphasis on primary prevention will also be examined. Emphasis is placed on secondary and tertiary prevention in assisting the client system to attain or maintain wellness from stressors common to children from birth to adolescence. Clinical experiences are offered in both acute care and community settings to provide for correlation of theory to practice.

N421 Population Health Nursing **5 credit hours: 3 credits of classroom instruction and 2 credits (6 clock hours per week of clinical instruction).** Co- or Pre-requisites: N361, N321.

This clinical course is designed to provide an introduction to population-focused nursing and to cultivate an awareness of the multifaceted role of the community health nurse in the promotion of optimum wellness in the health care system. The learner integrates the concepts of prevention, adaptation, environment, continuity of care, multidisciplinary collaboration, evidence-based practice and cultural diversity to provide holistic care to individuals, families and groups experiencing potential or actual stressors. Sources for local and global information and resources for primary, secondary and tertiary prevention will be explored. Classroom assignments and structured clinical assignments and experiences will facilitate the learners' application of theoretical concepts and functioning to practice as a nurse generalist in the community.

N431 Health Policy and Professional Leadership

3 credit hours Pre-requisite: Completion of all coursework in the lower division of the curriculum.

This non-clinical course is designed to ensure that the baccalaureate-educated nurse has a solid understanding of the broader context of health care, including how patient care services are organized and financed, and how reimbursement is structured. The learner will develop an understanding of the identification of

healthcare issues, how healthcare policy is both developed and changed, and how that process can be influenced through the efforts of nurses, other healthcare professionals, the laity and special advocacy groups. Emphasis is placed on the professional nurse's role as Member of the Profession.

N432 Complex Health Alterations in Nursing Practice

6 credit hours: 4 credits of classroom instruction and 2 credits (6 clock hours per week of clinical instruction). Pre-or-co-requisite: N361, N321.

This clinical course uses the Neuman Systems Model as a means to explore and learn about complex stressors affecting the adult client system. While the course involves a holistic approach to client care, specific physiological stressors that are examined include acute and chronic renal failure; alterations in cardiac, peripheral vascular, respiratory, and neurological function; and multiple organ dysfunction syndrome. Learners integrate prior learning from select areas of general education and nursing coursework to develop the requisite body of knowledge and skills required as professional nurses. A concurrent clinical component enables learners to apply theory to practice.

N445 Internship and Management in Nursing Practice

7 credit hours: 4 credits of classroom instruction and 3 credits (9 clock hours per week of clinical instruction or 18 clock hours clinical per week for 8 weeks).

Prerequisites: N361, N342, N345, N370, N425. Co- or Pre-requisite: N432.

This clinical course provides the pre-professional nursing learners with the opportunity to explore the scope of professional nursing practice through an intensive clinical immersion and mentorship program in the final semester of the program. The outcomes of the course are intended to facilitate and prepare the baccalaureate-prepared generalist nurse to

practice within complex healthcare systems and assume the roles of provider of care; designer/manager/coordinator of care; and member of the profession. The learner provides care for client systems in an acute care environment in collaboration with nurse mentors/preceptors. The skills associated with leadership, collaboration, interdisciplinary teams, nursing care delivery management and evaluation, and quality improvement models are emphasized. Learners are also required to complete a scholarly project that is based on an identified clinical problem. The project is designed to be an exemplar of evidence-based practice (Care that integrates the best research with clinical expertise and patient values for optimum care).

N450 Issues, Trends and Nursing Theory

3 credit hours Prerequisites: N361, N342, N370, N345, N425. Co- or Pre-requisite: N432.

This non-clinical course is offered at the senior level of the undergraduate curriculum. The content is aimed at examining the past, current and future impact of selected themes related to health care in general, and nursing practice in particular at the local, national, and international levels. The course emphasizes the longitudinal nature of many contemporary issues and trends that have a direct impact on the development of nursing science, practice and education.

RN BSN Track

General Information

Continuing your education while you are still working is a whole lot easier with the Methodist College of Nursing (MCON) RN-BSN program. This program is conducted almost entirely online, with one or two synchronous sessions per course (face-to-face or through the web). This program enables practicing nurses, who have taken and passed the NCLEX exam, to obtain a Bachelor of Science in Nursing. It gives you the same robust curriculum as our typical program, with the added advantage of allowing you the flexibility to work around your schedule. You can also transfer up to 30 of the total 64 required nursing credits.

The MCON RN-BSN program adheres to the nationally recognized best practices and the highest standards of quality in online education. Additionally, we internally review each course thoroughly to ensure quality and our instructors receive intensive training on teaching in an online environment.

Requirements for Degrees

Course Descriptions for RN-BSN track Students

N299 Transition to Baccalaureate Nursing (4 credit hours)

Prerequisite: Admission to the RN to BSN track.

This course will provide the adult learner with the opportunity to examine the concepts of baccalaureate nursing using the client as self. Content will focus on the development of professional nursing practice, proficiency within the online learner environment, and collaboration with the multidisciplinary team.

N312 Health Assessment Across the Lifespan (3 credit hours)

Prerequisite: Admission to the RN to BSN track.

The course is designed to provide the learner the theoretical knowledge and clinical competency needed for evaluating a client's state of health. The learner experience focuses upon holistic assessment of the client system. Emphasis is placed on data collection, interpretation, and documentation of findings. The learner is provided with multiple opportunities in both the laboratory and clinical settings to develop the assessment skills.

N390 Spirituality in Nursing Practice (3 credit hours)

Prerequisite: Admission to the RN-BSN program track.

This course provides learners with the opportunity to explore the topic of spirituality in nursing and health care to enhance their roles as practicing nurses. This course is designed to help students learn how to provide holistic care of spiritual needs to individuals and families. Spirituality, as a client variable, is suggested to move the client system toward well being through spiritual energy. This course will explore the world of spiritual care and what it means to nursing practice. This course will show how nursing assessment, diagnosis, planning, implementation, and evaluation fit within a spiritual content.

N390 Multicultural Nursing Practice (3 credit hours)

Prerequisite: Admission to the RN-BSN program track.

This course will increase the learner's understanding of cultural influences upon the learners and clients (individual, family, groups, and community) perceptions, values, and beliefs concerning health, illness, and healing. Meanings associated with cultural phenomenon, traditions, practices, and rituals will be explored to provide a context to clients' responses to health, health challenges, and nursing care. In addition, the learner will develop an increasing awareness of the critical role a person's culture

plays in maintaining, retaining, or attaining wellness.

**HS 200 Informatics in Healthcare
(3 credit hours)**

Prerequisite: Admission to the RN-BSN program track

This course will provide the learner with the opportunity to become proficient in computer, information and communication literacy. The content focus is the student learning to be competent in using technology in everyday life, preparing them to be confident of their abilities to thrive in a digital healthcare environment. Basic computer and software knowledge and skills will be covered, as well as web and databases search and analysis. Various channels of electronic and digital communication will also be explored. Legal and ethical issues will also be discussed.

**N325 Nursing of the Aging Population
(2 credit hours)**

Prerequisite: N299

This course is designed to provide the learner with the theoretical knowledge of the aging population. In addition, the learner will identify client stressors and investigate the three levels of prevention (primary, secondary and tertiary) to attain, maintain and retain the integrity of the aging client.

**N416 Research in Nursing Practice
(3 credit hours)**

Prerequisite: N299

This course focuses on the beginning level competencies the student needs in order to use the process of scientific inquiry as the basis for professional nursing practice. Opportunities are provided for the student to apply the research process to critically read and analyze nursing research studies. A general understanding of, and appreciation for, research is provided. Presents research data through poster and paper presentations.

**N417 Applied Research in Nursing Practice
(3 credit hours)**

Pre-requisite: N416

This course is an extension of basic research and utilization methods. The focus is on preparing the student for leadership in the application of nursing research to evidence based nursing practice. Students will identify a

clinical problem or issue that warrants a systematic appraisal of the relevant literature to inform clinicians, critically appraise the evidence and translate the findings into clinical practice.

**N431 Health Policy and Professional Leadership
(3 credit hours)**

Pre-requisite: N299

This non-clinical course is designed to ensure that the baccalaureate-educated nurse has a solid understanding of the broader context of health care, including how patient care services are organized and financed, and how reimbursement is structured. The learner will develop an understanding of the identification of healthcare issues, how healthcare policy is both developed and changed, and how that process can be influenced through the efforts of nurses, other healthcare professionals, the laity and special advocacy groups. Emphasis is placed on the professional nurse's role as Member of the Profession.

**N429 Collaboration and Management in Nursing Practice
(3 credit hours)**

Pre-requisites: N416.

This RN to BSN track theory course is designed to present the nurse as a leader/manager, the nursing unit, or the healthcare agency as a core system with lines of defense and lines of resistance. Leadership and management strategies are used as interventions aimed at maintaining or restoring stability and order within the core system.

**N429P Practicum in Collaboration and Management in Nursing Practice
(2 credit hours)**

Pre- or co-requisite: N429

Provides the opportunity for the learner to explore the role of the nurse leader/manager within the healthcare organization. Emphasis is placed on organizational culture, collaboration, teamwork, the process of change, quality assurance, and risk management. The learner collaborates with the faculty and a preceptor to achieve a self-determined learning plan. The course is graded as Pass/Fail.

**N451 Population Health and Nursing
Practice Part I
(3 credit hours)**

Pre-requisites: N429, N429P

Pre-or-Co-requisite: N417

Part I of the Community/Public Health course introduces students to concepts in population-focused nursing, community health, and public health with emphasis on nursing care to populations. Theory and practicum are designed to build on students' professional experience to prepare them for population-focused practice in community/public health settings to meet health needs of the community and society. Theories from nursing, public health and social and behavioral sciences are utilized to provide culturally competent nursing care to total populations or the individuals, families and groups within the context of that population. Primary prevention strategies for populations at risk are emphasized to promote and protect health, and prevent disease across the lifespan. Local, state, and national health policies, political and economic influences will be part of the analysis of community issues and activities.

**N452 Population Health and Nursing
Practice Part II
(3 credit hours)**

Pre-requisites: N417, N451.

Part II of the Community/Public Health course introduces students to concepts in population-focused nursing, community health, and public health with emphasis on nursing care to populations. Theory and practicum are designed to build on students' professional experience to prepare them for population-focused practice in community/public health settings to meet health needs of the community and society. Theories from nursing, public health and social and behavioral sciences are utilized to provide culturally competent nursing care to total populations or the individuals, families and groups within the context of that population. Primary prevention strategies for populations at risk are emphasized to promote and protect health, and prevent disease across the lifespan. Local, state, and national health policies, political and economic influences will be part of the analysis of community issues and activities.

BSN Completion Track (Discontinues at the end of Spring 2012)

General Information

This cohort based program last accepted students in the Fall 2010 semester. Applications for this program are no longer being accepted.

Requirements for Degrees

Course Descriptions for Current Pre-licensure BSN Completion track learners

N302 Dimensions of Holistic Nursing 5 credit hours (3 credit hours classroom and 2 credit hours laboratory/clinical experience).

Prerequisite: Admission to the nursing program

This course introduces the learner to the nursing profession and contemporary nursing practice. It is designed to provide the learner with an introduction to theoretical frameworks for nursing practice, focusing on the Neuman Systems Model as a framework of practice to study stressors affecting clients in today's society. The mission, philosophy, and conceptual framework of the College are reviewed with the learner focusing on the roles of the professional nurse, and the tools of practice required in the delivery of holistic nursing care to a culturally diverse client system. Laboratory and clinical experiences allow the learner to examine the scope of professional nursing.

N306-Pathophysiology in Nursing Practice 4 credit hours

Prerequisite: Admission to the nursing program

This course builds on previous content in the life sciences. It is an integrated course, which introduces the mechanisms and theories related to physiologic regulatory processes and the development of health deviations when the lines of defense are broken. The assessment component of the nursing process provides the theoretical basis for making decisions. Emphasis is placed upon an understanding of the underlying stressors and assessments related to pathological processes.

N312 Health Assessment Across the Lifespan 3 credit hours (2 credit hours classroom and 1 credit hours laboratory experience).

Prerequisite: Admission to the nursing program; completion of Anatomy/Physiology and English/Speech

The course is designed to provide the learner the theoretical knowledge and clinical competency needed for evaluating a client's state of health in relation to developmental levels across the

lifespan. The learner experience focuses upon holistic assessment of the client system, with a focus on primary, secondary, and tertiary prevention. Normal lines of defense and intrapersonal, interpersonal, and extrapersonal stressors on the client system will be identified. Emphasis is placed on data collection, interpretation, documentation of findings, and evaluation of lab values and diagnostic testing. The learner is provided with multiple opportunities in both the laboratory and clinical settings to develop the assessment skills.

N316 Pharmacology in Nursing Practice 3 credit hours

Prerequisite: Admission to the nursing program or permission of instructor

This course builds on select areas of general education knowledge and enables the learner to explore the basic concepts and principles of pharmacology in nursing practice. The five variables of the Neuman Systems Model are threaded throughout the course to assist learners to understand the affect of stressors on the holistic client. The collaborative role of the nurse in the context of the multidisciplinary team and use of the nursing process are stressed in developing a comprehensive approach to the clinical applications of drug therapy. An emphasis is placed on the therapeutic use of medications, focusing on attaining and maintaining the client system's normal line of defense and lines of resistance. The legal and ethical aspects of safe medication administration and client education are also examined.

N325 Nursing of the Aging Population 2 credit hours

Prerequisite: N302, N306, N312, N316

This course is designed to provide the learner with the theoretical knowledge of the aging population. In addition, the learner will identify client stressors and investigate the three levels of prevention (primary, secondary, and tertiary) to attain, maintain, and retain the integrity of the aging client.

N335 Inquiry and Evidence : Knowing, Reasoning and Evidence

1 credit hour

Prerequisite: Admission to the nursing program

This is the first course in a series of inquiry and nursing scholarship courses and will provide an introductory understanding of inquiry, critical analysis, and research; practice formulating logical arguments; practice identifying and formulating clinically relevant research questions; opportunities to retrieve, read, and synthesize information and (filtered and unfiltered) research evidence.

N337 Research in Nursing Practice I

1 credit hour

Pre- or Co-requisite: N335 and N302

This is the first in a series of two inquiry and nursing scholarship courses and will provide an overview of the component parts of the research process including an introductory understanding of the basic concepts, principles, issues, and obligations related to protection of the rights and welfare of research subjects. Content is discussed in terms of clinical nursing research problems and application to clinical settings. The course focuses on qualitative studies.

N342 Maintenance of Mental Health in Client Systems

5 credit hours (3 credit hours classroom and 2 credit hours laboratory/clinical experience).

Prerequisite: N302, N306, N312, N316

Pre-or Co-requisite: N361

This course is designed to assist learners with the development of theoretical knowledge and skills needed to support various client systems in attaining and maintaining optimal mental health. Emphasis is placed on assessing diverse client populations, utilizing therapeutic communication, and selecting culturally appropriate nursing interventions to support adaptation within client systems. The learner relates with clients in a variety of mental health milieus.

N361 Health Alterations in Nursing Practice
6 credit hours (4 credit hours classroom and 2 credit hours laboratory/clinical experience).

Prerequisite: N302, N306, N312, N316

This course focuses on holistic nursing care of the client system experiencing stressors that alter health. Emphasis is placed on the role of the professional nurse in assisting client systems to cope with intrapersonal, interpersonal, and extrapersonal stressors. The learner will apply therapeutic nursing interventions based on empirical evidence and critical thinking to assist the

client system in achieving an optimal level of wellness. Major concepts taught include the management of the client with disorders of integumentary, hematological, musculoskeletal, gastrointestinal, urinary, and endocrine systems. Clinical opportunities correlated with course content are provided to enable the learner to create positive outcomes for the client system.

N390 Selected Topics in Nursing Practice
3 credit hours

Prerequisite: N302, N306, N312, N316

This course will provide learners opportunities to explore a variety of topics in nursing and health care, which will enhance their roles as practicing nurses. Learners will be provided with the option of exploring two different topic areas over two semesters, or complete a focused, intense two-semester study of one topic. Selected topics will be provided by faculty members.

N411 Childbearing and Childrearing Family In Nursing Practice

8 credit hours (4 credit hours classroom and 4 credit hours laboratory/clinical experience).

Prerequisite: N361, N316

This course provides the learner the theoretical knowledge to apply the nursing process to culturally diverse family client systems during childbearing and childrearing phases of the family life cycle. The pregnancy experience from conception through recovery will be explored. Child development and the effects of childhood disease and compromise on the family system are presented. Selected health issues for men and women with an emphasis on primary prevention will also be examined. The clinical component will provide for correlation of theory to practice in the community, as well as in the acute care setting.

N425 Community/Population Health Nursing and Client Systems

5 credit hours (3 credits of classroom instruction and 2 credit hours of clinical experience)

Pre-or-co-requisites: N361

This clinical course is designed to provide an introduction to community-focused nursing and to cultivate an awareness of the multifaceted role of the community health nurse in the promotion of optimum wellness in the health care system. The learner integrates the concepts of prevention, adaptation, continuity of care, multidisciplinary collaboration, evidence-based practice and cultural diversity to provide holistic care to individuals, families and communities experiencing potential or

actual stressors. Sources for local and global information and resources for primary, secondary and tertiary prevention will be explored. Classroom assignments and structured clinical assignments will facilitate the learners' application of theoretical concepts and functioning to practice as a nurse generalist in the community.

N432 Complex Health Alterations in Nursing Practice

6 credit hours (4 credit hours classroom and 2 credit hours laboratory/clinical experience).

Prerequisite: N361, N342, N411, N425

This course uses the Neuman System Model as a means to explore and learn about complex stressors affecting the adult client system. While the course involves a holistic approach to client care, specific physiological stressors that are examined include acute and chronic renal failure; alterations in cardiac, peripheral vascular, respiratory, and neurological function; and multiple organ dysfunction syndrome. Learners integrate prior learning from select areas of general education and nursing coursework to develop the requisite body of knowledge required as professional nurses. A concurrent clinical component enables learners to apply theory to practice.

N339 Research in Nursing Practice II
2 credit hours

Pre-requisite: N337, N361

The course is the second of two courses in research in nursing practice. It focuses on the beginning level competencies the student needs in order to use the process of scientific inquiry as the basis for professional nursing practice.

Opportunities are provided to apply the research process to critically read and analyze nursing research studies. A general understanding of and appreciation for research is provided. In the second course the students will be explore the quantitative approach to research and its application to nursing.

N445 Internship and Management in Nursing Practice

7 credit hours: 4 credits of classroom instruction and 3 credits clinical (9 clock hours per week of clinical instruction or 18 clock hours clinical per week for 8 weeks).

Prerequisites: N361, N342, N345, N41, N425. Co- or Pre-requisite: N432.

This clinical course provides the pre-professional nursing learners with the opportunity to explore the scope of professional nursing practice through an intensive clinical immersion and mentorship program in the final semester of the program. The outcomes of the course are intended to facilitate and prepare the baccalaureate-prepared generalist nurse to practice within complex healthcare systems and assume the roles of provider of care; designer/manager/coordinator of care; and member of the profession. The learner provides care for client systems in an acute care environment in collaboration with nurse mentors/preceptors. The skills associated with leadership, collaboration, interdisciplinary teams, nursing care delivery management and evaluation, and quality improvement models are emphasized. Learners are also required to complete a scholarly project that is based on an identified clinical problem. The project is designed to be an exemplar of evidence-based practice

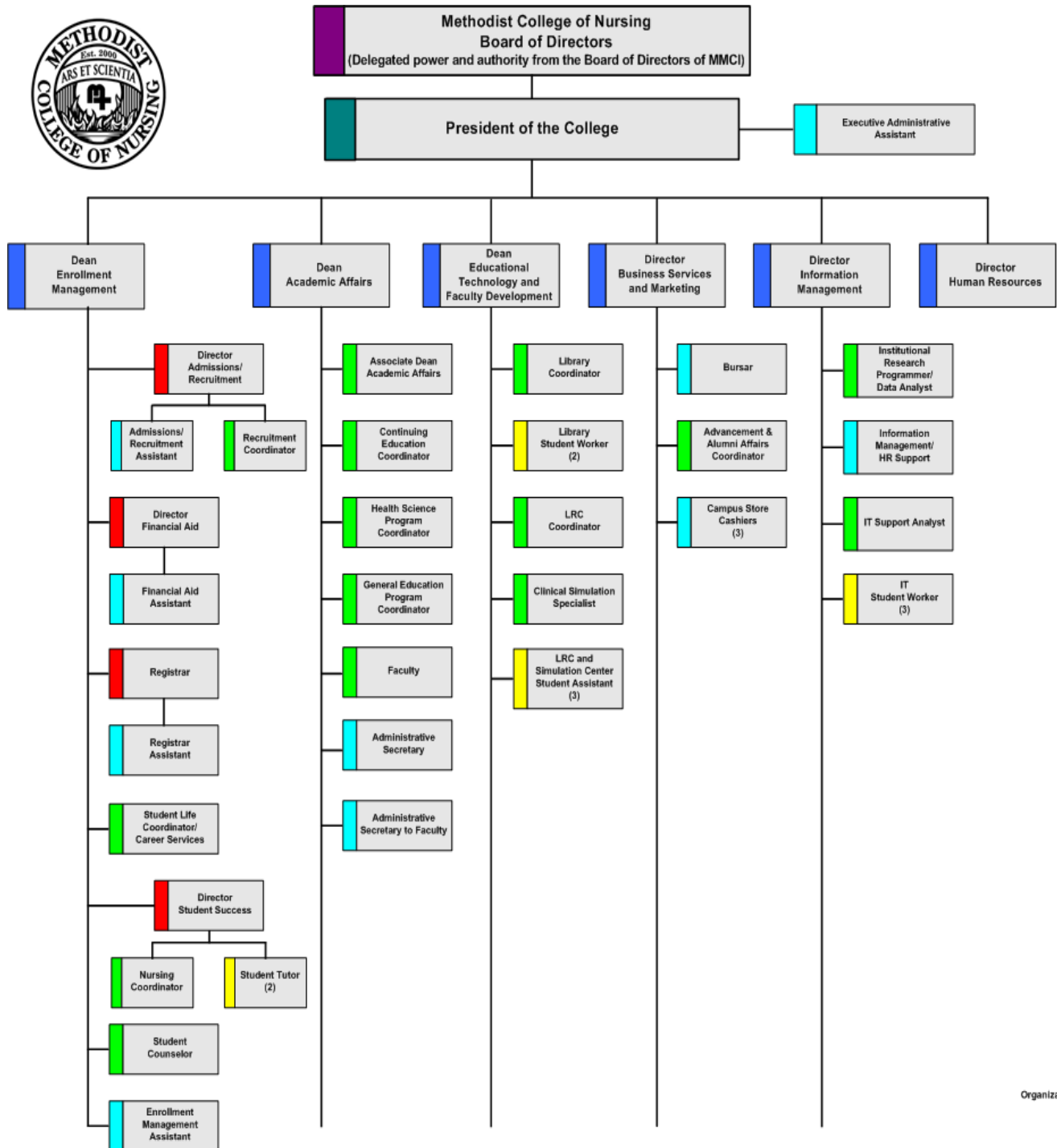
N450 Issues, Trends and Nursing Theory

3 credit hours. *Prerequisites: N361, N342, N370, N345, N425.*

This non-clinical course is offered at the senior level of the undergraduate curriculum. The content is aimed at examining the past, current and future impact of selected themes related to health care in general, and nursing practice in particular at the local, national, and international levels. The course emphasizes the longitudinal nature of many contemporary issues and trends that have a direct impact on the development of nursing science, practice and education

College Personnel

Organizational Structure



Organizational Structure
August 1, 2011

MCON PERSONNEL

College Administration

Kimberly Johnston, EdD, RNC-OB, CNE

President of the College

BSN Pennsylvania State University, University Park, PA

MSN Pennsylvania State University, University Park, PA

EdD Widener University, Chester, PA

RNC Certification - Inpatient Obstetric Nurse

CNE Certified Nurse Educator

Elaine "Eli" Collins-Brown, EdD

Dean of Educational Technology & Faculty Development

BA Northwood University, Cedar Hill, TX

MEd Texas Christian University, Fort Worth, TX

EdD Illinois State University, Normal, IL

Kirstin Marshall, MA

Director of Business Services and Marketing

BS Bradley University, Peoria, IL

MA Bradley University, Peoria, IL

Linda Moore, BA

Director of Human Resources

BA University of Illinois, Springfield, IL

Linda Pendergast, PhD, RN

Dean of Academic Affairs

BSN University of Southern Mississippi, Hattiesburg, MS

MSN Louisiana State University Medical Center, New Orleans, LA

PhD Louisiana State University, Baton Rouge, LA

David Peterson, MS

Dean of Enrollment Management

BS Illinois State University, Normal, IL

MS Illinois State University, Normal, IL

Bud Sandy, BS

Director of Information Management

BS Illinois State University, Normal, IL

Administration Support Staff

Susan King

Executive Administrative Assistant to the President of the College

Academic Affairs

Linda Pendergast, PhD, RN

Dean of Academic Affairs

BSN University of Southern Mississippi, Hattiesburg, MS

MSN Louisiana State University Medical Center, New Orleans, LA

PhD Louisiana State University, Baton Rouge, LA

Pam Ferguson, PhD, RNC, CNE

Associate Dean of Academic Affairs

BSN Iowa Wesleyan College, Mt. Pleasant, IA

MSN Bradley University, Peoria, IL

PhD Illinois State University, Normal, IL

RNC Certification – Medical-Surgical Nursing

CNE Certified Nurse Educator

Academic Affairs Support Staff

Amber D. Evans, MS

Coordinator of Continuing Education

Technical Writing Certificate California State University, Chico, Chico, CA

BA California State University, Chico, Chico, CA

MS California State University, Chico, Chico, CA

Marjorie Getz, MA, MPHIL, LCPC

Coordinator, Health Sciences Program

BS University of Maryland, College Park, Maryland

MA Wesleyan University, Middletown, Connecticut

MPHIL Yale University School of Medicine, New Haven, Connecticut

Kip Strasma, PhD

Coordinator of General Education

BA St. Louis University, St. Louis, MO

MA Illinois State University, Normal, IL

PhD Illinois State University, Normal, IL

Kathy Forgason

Administrative Secretary to the Dean of Academic Affairs

Stephanie Doss

Administrative Secretary to the Faculty

Office of Institutional Effectiveness Support Staff

Sharlette Walker

Institutional Effectiveness Associate

Enrollment Management

David Peterson, MS

Dean of Enrollment Management

BS Illinois State University, Normal, IL

MS Illinois State University, Normal, IL

Enrollment Management Support Staff

Angela Robinson, MBA

Director of Financial Aid

BS Mississippi State University, Starkville, MS

MBA Mississippi State University, Starkville, MS

Susan Rodgers, AAS*Financial Aid Assistant*

AAS Midstate College, Peoria, IL

Holly Walker, BA*Director of Admissions & Recruitment*BA University of Illinois at Springfield,
Springfield, IL**Mary Jane Dowling, MSN, RN***Recruitment Coordinator*BSN Illinois Wesleyan University, Bloomington, IL
MSN Lewis University, Romeoville, IL**Melissa Earnest, MS***Admissions & Recruitment Assistant*BS University of Wisconsin, Madison, WI
MS University of Wisconsin, Whitewater, WI**Tricia Fox, MA***Director, Center for Student Success*BA Ball State University, Muncie, IN
MA Bradley University, Peoria, IL**Gwen Huls, BSN, RN***Nursing Coordinator, Center for Student Success*

BSN Valparaiso University, Valparaiso, IN

Ann Garey*Registrar***Kristin Maholovich, BA***Registrar Assistant*

BA Concordia University, Mequon, WI

Jordan Ticaric, MA*Student Life & Career Counseling Coordinator*BA Bradley University, Peoria, IL
MA Bradley University, Peoria, IL**Debra Disney, MEd, LCPC, DCC***Student Counselor*BA Governors State University, University Park,
IL

MEd Southern Illinois University, Carbondale, IL

LCPC Licensed Clinical Professional Counselor

DCC Distance Credentialed Counselor

Cyndi Wedell, BS*Enrollment Management Assistant*

BS Bradley University, Peoria, IL

Educational Technology and Faculty Development**Elaine "Eli" Collins-Brown, EdD***Dean of Educational Technology & Faculty
Development*

BA Northwood University, Cedar Hill, TX

MEd Texas Christian University, Fort Worth, TX

EdD Illinois State University, Normal, IL

**Educational Technology and Faculty Development
Support Staff****Melissa Hudak, MSLIS***Library Coordinator*

BS Illinois State University, Normal, IL

MSLIS University of Illinois at Champaign,
Champaign, IL**Nikki Gill, RNC-OB, BSN***Learning Resource Center Coordinator*

BSN Bradley University, Peoria, IL

Denise Poland, MSN, RN-BC*Clinical Simulation Specialist*

BaN Augustana College, Sioux Falls, SD

MSN Walden University, Minneapolis, MN

RN-BC Certification- Professional Staff Development

Information Management**Bud Sandy, BS***Director of Information Management*

BS Illinois State University, Normal, IL

Information Management Support Staff**Derek Scott, BS***IT Support Analyst*

BS Robert Morris University, Springfield, IL

Human Resource Services**Linda Moore, BA***Director of Human Resource Services*

BA University of Illinois, Springfield, IL

Business Services and Marketing**Kirstin Marshall, MA***Director of Business Services and Marketing*

BS Bradley University, Peoria, IL

MA Bradley University, Peoria, IL

Business Services and Marketing Support Staff**Michelle Jones, BA***Bursar, Business Office*

BA University of Illinois, Springfield, IL

Jessica Dillon, BS*Development/Alumni Coordinator*BS Northwest Missouri State University,
Maryville, MO**Karen Parker, BA***Accountant*

BA University of Sioux Falls, SD

FACULTY

Katherine Bloompott, MSN, RN

BSN Methodist College of Nursing, Peoria, IL
MSN University of Phoenix, Phoenix, AZ

Michele Callaway RN, MSN

BSN St Francis Medical Center College of
Nursing, Peoria, IL
MSN University of Phoenix, Phoenix, AZ

Pam Di Vito-Thomas, ADN, BSN, MS, Ph.D.

ADN Tulsa Community College, Tulsa, OK
BSN Northeastern University, Tahlequah, OK
MS University of Oklahoma Health Sciences
Center, Tulsa, OK
Ph.D. University of Oklahoma, Norman, OK

Debra Kay Gilles MSN,BSHS,RN

RN Illinois Central College, East Peoria, IL
BSHS University of St. Francis, Joliet, IL
MSN Liberty University, Lynchburg, VA

Connie Gowda, MSN, RN

BSN Bradley University, Peoria, IL
MSN Lewis University, Romeoville, IL

Barbara Hekel, MS, RN, MPH

BSN University of Iowa, Iowa City, IA
MSN University of Illinois at Chicago, Chicago, IL
MPH University of Illinois at Chicago, Chicago, IL

Cathy Jackson-Bruce, MS, RN

BSN Bradley University, Peoria, IL
MS University of St. Francis, Joliet, IL

Cindy Kohtz, EdD, RN, CNE

BS Bradley University, Peoria, IL
MSN University of Illinois at Chicago, Chicago, IL
EdD Illinois State University, Bloomington, IL
CNE Certified Nurse Educator

Stephanie R. Lampe, MSN, RN

BSN St. Francis Medical Center College of
Nursing, Peoria, IL.
MSN University of Phoenix, Phoenix, Arizona

Sylvia Link, PhD, RN

BSN Lakeview College of Nursing, Danville, IL
MS Governors State University,
University Park, IL
PhD Indiana State University, Terre Haute, IN

Toni Lutz, MSN, RN

BSN OSF St. Francis College of Nursing,
Peoria, IL
MSN/NE Kaplan University, Davenport, IA

Julia A. Mattingly, MSN, RN

BSN Medical University of South Carolina,
Charleston, South Carolina
MSN University of Hartford, Hartford, CT

Joy Moss, MSN, RN

BS University of St. Francis, Joliet, IL
MSN OSF St. Francis College of Nursing,
Peoria, IL

Debra Murphy, MS, RN

MS Governor's State University,
University Park, IL

Nancy Novotny, PhD, MS, RN

BS Bradley University, Peoria, IL
MS University of Illinois at Chicago, Chicago, IL
PhD University of Illinois at Chicago, Chicago, IL

Jill Pegg, MS, RN

BSN Southern Illinois University, Edwardsville, IL
MS University of Illinois at Chicago, Chicago, IL

Lisa Preston, MSN, RN

BS University of Saint Francis, Joliet, IL
MSN/ED University of Phoenix, Phoenix, AZ
Master of Science in Nursing/
Specialization in Nursing/Health Care
Education

Valerie Ragon, MS, RN

BSN Bradley University, Peoria, IL
MS University of Illinois at Chicago, Chicago, IL

Dixie Reynolds, MSN, RN

BSN Mennonite College of Nursing,
Bloomington, IL
MSN University of Washington, Seattle, WA

Rebecca Saunders, MSN, APN

BSN Saint Francis College of Nursing, Peoria, IL
MSN University of Illinois at Chicago, Peoria, IL

Amber Schmidt

Theresa Schwindenhammer, MSN, RN

BSN Illinois Wesleyan University, Bloomington, IL
MSN St. Francis College of Nursing, Peoria, IL

Sue Smith, RN

BSN Southern Illinois University, Edwardsville, IL
MSN OSF St. Francis College of Nursing,
Peoria, IL

Debbie Stark, MSN, RN

BSN University of Chicago, Chicago, IL
MSN Walden University, Online

Nora Sullivan, MSN, RN

BA Cleveland State University, Cleveland, OH
BSN Bradley University, Peoria, IL
MS University of Illinois at Chicago, Chicago, IL

June West, MSN, RN

BSN OSF St. Francis College of Nursing, Peoria,
IL
MSN OSF St. Francis College of Nursing, Peoria,
IL

Paige Staes Whitney, MSN, RN

BSN Truman State University, Kirksville, MO
MSN University of Phoenix, Phoenix, AZ

Accreditation

Accreditation and Approval

The basic authority to exist as a College of Nursing comes from the Illinois Board of Higher Education. The Illinois Department of Financial and Professional Regulation (State Board of Nursing) provides approval for the graduates of the nursing program to take the Nursing Licensing Exam (NCLEX). These entities ensure that the citizens of Illinois have access to quality higher education and that the graduates are licensed as safe to practice nursing.

Methodist College of Nursing is accredited by the Higher Learning Commission, a commission of The North Central Association. The College's baccalaureate nursing program is accredited by the National League for Nursing Accrediting Commission, Inc., (NLNAC), and by the Commission on Collegiate Nursing Education (CCNE).

The general purposes of accreditation are to assure quality, provide access to federal funds, and ease transfer of credit.

Membership

Methodist College of Nursing and its baccalaureate nursing program are members of the following organizations:

- Alliance Library System (ALS)
- American Association of Colleges of Nursing, Inc. (AACN)
- American Association of Collegiate Registrars and Admissions' Officers (AACRAO)
- American Council on Education (ACE)
- American Health Sciences Education Consortium (AHSEC)
- Association of Governing Boards (AGB)
- Council for Higher Education Accreditation (CHEA)

- The Illinois Association of Colleges of Nursing (IACN)
- National Association of Independent Colleges and Universities (NAICU)
- National Association of Student Financial Aid Administrators (NASFAA)
- National League for Nursing (NLN)

Governance

Methodist College of Nursing Board of Directors is the governing body of Methodist College of Nursing. The President of the College, who is the Chief Executive Officer of Methodist College of Nursing, reports directly to the Methodist College of Nursing Board and administers the College through the power invested in her or him by the Board of Directors.

MCON Catalog Index

#

2011-12 PRE-LICENSURE BACCALAUREATE DEGREE IN NURSING & BSN COMPLETION TRACK ACADEMIC CALENDAR*	4
2011-2012 RN-BSN TRACK ACADEMIC CALENDAR*	5
2011-12 SECOND DEGREE ACCELERATED BSN TRACK ACADEMIC CALENDAR*	6
2012-13 PRE- PRE-LICENSURE BACCALAUREATE DEGREE IN NURSING & BSN COMPLETION TRACK ACADEMIC CALENDAR*	7
2012-2013 RN-BSN TRACK ACADEMIC CALENDAR*	9
2012-13 SECOND DEGREE ACCELERATED BSN TRACK ACADEMIC CALENDAR*	8

A

ACADEMIC ADVISING	32
ACADEMIC ADVISEMENT PROCEDURE	33
ACADEMIC CALENDARS	4
ACADEMIC HONORS AND AWARDS	41
ACADEMIC PROGRAM	35-36
ACADEMIC PROGRESSION & NON-PROGRESSION	37
ACADEMIC PURPOSE AND GOALS	35
ACADEMIC SEMESTER LENGTH & CREDIT	40
ACADEMIC STANDARDS	38
ACADEMIC SUPPORT POLICIES, INFORMATION & PROCEDURES	36
ACCREDITATION & APPROVAL	69
ADDING/DROPPING A COURSE	39
ADMINISTRATIVE DROP/ADD	38
ADMISSION CRITERIA AND POLICIES	15
ADMISSION TO THE COLLEGE	15
ADVANCED PLACEMENT EXAMINATIONS (AP)	19
ADVISEMENT PROCEDURE	40
AMERICANS WITH DISABILITIES	12
APPLICATION DEADLINES	17

B

BACHELOR OF SCIENCE IN NURSING SECOND DEGREE ACCELERATED BSN TRACK TUITION AND FEE SCHEDULE	21-22
BSN COMPLETION TRACK GENERAL INFO	61

C

CAMPUS	14
CAMPUS FACILITIES	14
CAMPUS LIFE	31
CAMPUS SAFETY	32
CAREER PLACEMENT	34
CENTER FOR STUDENT SUCCESS	33
CHILD CARE	33
CLASS STANDING	42
COLLEGE LEVEL EXAMINATION PROGRAM (CLEP)	18
COLLEGE PERSONNEL – ORGANIZATIONAL STRUCTURE	64
COMPUTER LABORATORY	34
CORE CURRICULUM	42
COURSE DESCRIPTIONS FOR CURRENT PRE-LICENSURE BSN COMPLETION TRACK LEARNERS	61-63
COURSE DESCRIPTIONS FOR PRE-LICENSURE BACCALAUREATE DEGREE IN NURSING TRACK LEARNERS	44-51
COURSE DESCRIPTIONS FOR RN-BSN TRACK STUDENTS	58-60
COURSE DESCRIPTIONS FOR SECOND DEGREE ACCELERATED BSN TRACK LEARNERS	52-57
CREDIT BY EXAMINATION	18
CREDIT THROUGH MILITARY EXPERIENCE	18
D	
DEAN'S LIST	42
DEGREE COMPLETION REQUIREMENTS	41
DISABILITY SERVICES	34
E	
EQUAL ACCCESS/EQUAL OPPORTUNITY/FERPA	12
F	
FACULTY	67
FAMILY EDUCATIONAL RIGHTS AND PRIVACY ACT	12
FEDERAL DIRECT PLUS LOANS FOR PARENTS	29
FEDERAL DIRECT STAFFORD LOANS	29
FEDERAL PELL GRANTS	28

FEDERAL SUPPLEMENTAL EDUCATIONAL OPPORTUNITY GRANTS (FSEOG).....	28
FEDERAL WORK STUDY (FWS)	28
FERPA.....	12
FINANCIAL AID.....	28
FINANCIAL AID OVERVIEW.....	28
FINANCIAL AID PROGRAMS	28
FINANCIAL INFORMATION.....	20
FOUR YEAR PRE-LICENSURE BSN GENERAL INFO.....	43
<u>G</u>	
GENERAL EDUCATION REQUIREMENTS.....	42
GENERAL EDUCATION TRANSFER COURSES	17
GOVERNANCE	69
GRADE POINT AVERAGE CALCULATION.....	40
GRADING SCALE	38
GRADING STANDARDS.....	39
GRADUATE SCHOOL INFORMATION	34
GRADUATION REQUIREMENTS	40
<u>H</u>	
HISTORY.....	13
<u>I</u>	
ILLINOIS MONETARY AWARD PROGRAM (MAP).....	29
INCOMPLETE GRADES	39
INDEX.....	70
INSTITUTIONAL GOALS	14
INTRODUCTION TO METHODIST COLLEGE OF NURSING	13
<u>L</u>	
LAPTOP REQUIREMENTS FOR ALL STUDENTS	34
LEARNING RESOURCE CENTERS.....	33
LIBRARY	32
<u>M</u>	
MCON CATALOG INDEX.....	70
MCON FACULTY	67
MCON PERSONNEL	65
MEMBERSHIP	69

METHODIST COLLEGE OF NURSING ORGANIZATIONAL STRUCTURE	64
MISSION STATEMENT	14
<u>N</u>	
NURSING HONOR SOCIETY.....	31
NURSING PROGRAMS.....	43
NURSING TRANSFER COURSES.....	18
<u>O</u>	
ORGANIZATIONAL STRUCTURE (CHART) – MCON	64
OTHER [STUDENT] ACTIVITIES	32
OUTCOMES OF ACADEMIC PROGRAM	36
OUTCOMES OF THE GENERAL EDUCATION CORE CURRICULUM (CORE COMPETENCIES).....	42
OVERVIEW	13
<u>P</u>	
PERSONAL COUNSELING	33
PRE-LICENSURE BACCALAUREATE DEGREE & BSN COMPLETION TRACK TUITION AND FEE SCHEDULE*	20-21
PRE-LICENSURE TRACK ADMISSION	15
PRESIDENT OF THE COLLEGE'S LIST	41
<u>R</u>	
READMISSION POLICY	17
REFUND PROCESSING POLICY	27
REGISTRATION AND ENROLLMENT POLICIES.....	38
REPEATED COURSES	40
RESIDENCE HALL	14
RESIDENCE LIFE.....	31
ROOM ASSIGNMENTS FOR RESIDENTIAL LIFE.....	31
RN-BSN TRACK ADMISSION	16
RN-BSN TRACK GENERAL INFORMATION	58
RN-BSN TRACK TUITION AND FEE SCHEDULE.....	25-26

S

SATISFACTORY ACADEMIC PROGRESS (for Financial Aid/Assistance Purposes)..... 29

SECOND DEGREE ACCELERATED BSN TRACK GENERAL INFORMATION 52

SECOND DEGREE ACCELERATED BSN TRACK TUITION AND FEE SCHEDULE” 22-23

STUDENT ACTIVITIES 31

STUDENT-AT-LARGE ADMISSION POLICY 16

STUDENT FITNESS CENTER 14

STUDENT GOVERNMENT ASSOCIATION (SGA)..... 31

STUDENT NURSES’ ASSOCIATION (SNA)..... 31

SUPPORT SERVICES 32

T

TABLE OF CONTENTS 10

TRANSFER CREDIT POLICY 17

TUITION AND FEE DENFITIONS..... 24

TUITION AND FEES 20-26

TUITION REFUND POLICY & SCHEDULES..... 27

V

VALUES 14

VISION STATEMENT 14

W

WELLNESS CENTER 14